



Investing in an open and secure Europe: €1.8 billion to fund Asylum, Migration, Integration and Security

Brussels, 25 March 2015

Investing in an open and secure Europe: €1.8 billion to fund Asylum, Migration, Integration and Security

Today the European Commission has approved 22 new multiannual national programmes under the Asylum, Migration and Integration Fund (AMIF) and the Internal Security Fund (ISF) for the period 2014-2020, worth together approximately €1.8 billion. An additional 36 national programmes will be approved later this year. These two strands of EU funding support Member States' efforts in the fields of asylum, migration and integration, and internal security.

Migration, Home Affairs and Citizenship Commissioner **Dimitris Avramopoulos** said: "*Migration is one of the ten priorities of this Commission. Making migration policy work in all its aspects is essential to the overall success of our societies. We want people to thrive and we want people to be safe. But Member States cannot do this alone. That is why the European Commission has consistently given tangible support to the Member States and will continue to do so.*"

The AMIF funding supports national efforts to: enhance reception capacities, improve the quality of asylum procedures in line with the Union standards, integrate migrants at local and regional levels and increase the sustainability of return programmes. The ISF programme supports national efforts to improve Member States' border management (in particular through the use of interoperable modern technologies), improve cross-border law enforcement cooperation and strengthen Member States' capacity to effectively manage security-related risks such as terrorism and violent radicalisation, drug trafficking, cybercrime and cyber security, trafficking in human beings, and other forms of organised crime.

In addition to the basic allocation (see Annex 2), most of the programmes approved by the Commission today benefit from additional amounts made available to some Member States who volunteered for the implementation of specific actions with a strong transnational dimension such as joint return and reintegration projects under the AMIF or the setting up of consular cooperation under the ISF. Additional funding under some of the ISF programmes will also be invested in the purchase of large scale equipment, which will be put at the disposal of Frontex joint operations whenever needed. Almost €100 million channelled through the AMIF programmes will be used to support the Union Resettlement Programme in the period 2014-2015.

The Commission is working towards the swift approval of the remaining national programmes. With a total budget of almost €7 billion for the period 2014-20 for AMIF and ISF, these Funds are the principal EU financial instruments for investing in an open and secure Europe.

Background

EU efforts in the field of Migration and Home Affairs are supported by the Asylum, Migration and Integration Fund and the Internal Security Fund.

The [Asylum, Migration and Integration Fund](#) contributes to the efficient management of migration flows and the development of a common approach to asylum and migration.

The **Internal Security Fund** (consisting of the [Borders and Visa](#) and the [Police cooperation and crisis management instrument](#)) helps ensure a high level of security and crime prevention in the Union, while at the same time enabling legitimate travel and ensuring solid management of the Union's external borders.

85% of the Funds are channelled through the **national programmes**: multiannual, strategic documents covering the 2014-20 period. These programmes are prepared, implemented, monitored and evaluated by the responsible authorities in the Member States, in partnership with the relevant stakeholders in the field, including civil society, and approved by the Commission.

The remainder (around 15% of all the resources) are managed by the Commission for which **work programmes** are adopted under the three financial instruments. It is through these Commission work programmes that Union Actions and emergency assistance to Member States are funded (See Annex 1

and the Work Programmes themselves here: [AMIF 2014](#), [ISF-B 2014](#), [ISF-P 2014](#)).

22 national programmes have now been approved by the Commission (under shared management), 17 AMIF programmes (Austria, Belgium, Bulgaria, Czech Republic, Germany, Estonia, Finland, France, Hungary, Lithuania, Luxemburg, Malta, The Netherlands, Portugal, Romania, Slovenia and the United Kingdom) and five ISF programmes (Belgium, Czech Republic, Germany, Denmark, France). An additional 36 national programmes will be approved later in 2015.

For more information

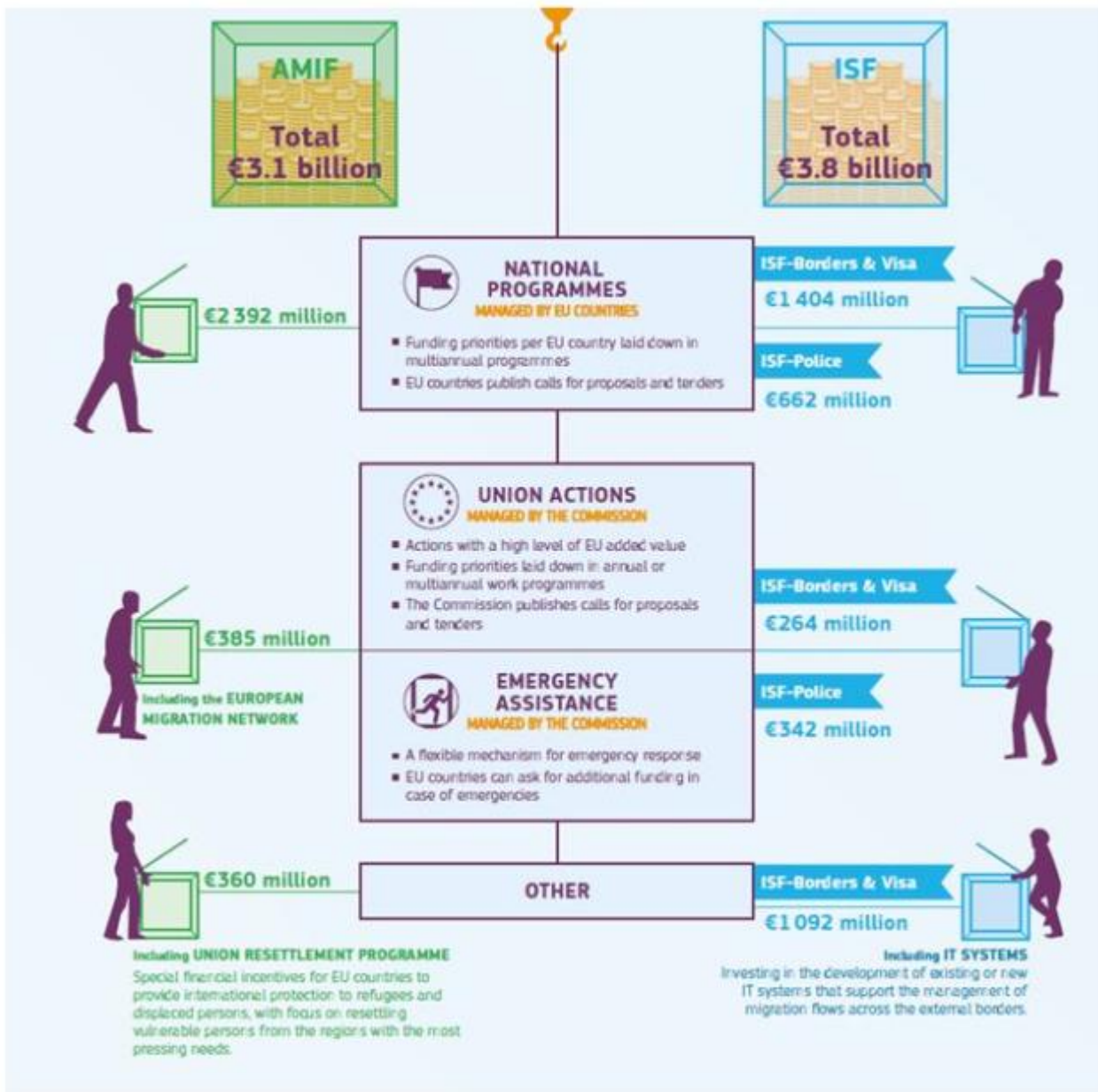
[Directorate General for Migration and Home Affairs Website](#)

[Website of First Vice-President Frans Timmermans](#)

[Website of Commissioner Dimitris Avramopoulos](#)

[Infographic - Home Affairs Funds](#)

Annex 1: The AMIF and ISF Funds explained



Annex 2: Financial allocations per Member State

Member State	Basic allocations			Specific Actions	Resettlement	TOTAL
	AMIF	ISF Borders	ISF Police			
Austria (AMIF)	64,533,977				6,000,000	70,533,977

Belgium (AMIF)	89,250,977			5,013,765.12	4,000,000	98,264,742.12
Belgium (ISF)		17,519,321	17,903,270	3,798,000		39,220,591
Bulgaria (AMIF)	10,006,777					10,006,777
Czech Republic (AMIF)	26,185,177				1,500,000	27,685,177
Czech Republic (ISF)		14,381,484	17,029,012	774,000		32,184,496
Germany (AMIF)	208,416,877				13,000,000	221,418,877
Germany (ISF)		51,753,437	79,504,401	3,195,000		134,452,838
Denmark (ISF)		10,322,133				10,322,133
Estonia (AMIF)	10,156,577					10,156,577
Finland (AMIF)	23,488,777				20,650,000	44,138,777
France (AMIF)	265,565,577			2,295,000	18,730,000	286,590,577
France (ISF)		84,999,342	70,114,640	22,050,000		177,163,942
Hungary (AMIF)	23,713,477				400,000	24,113,477
Lithuania (AMIF)	9,632,277					9,632,277
Luxembourg (AMIF)	7,160,577				800,000	7,960,577
Malta (AMIF)	17,178,877					17,178,877
Netherlands (AMIF)	94,419,077			26,750,000	9,860,000	131,029,077
Portugal (AMIF)	32,776,377				1,080,000	33,856,377
Romania (AMIF)	21,915,877			1,935,000	580,000	24,430,877
Slovenia (AMIF)	14,725,477					14,725,477
United Kingdom (AMIF)	370,425,577				22,200,000	392,625,577

IP/15/4662

Press contacts

[Natasha BERTAUD](#) (+32 2 296 74 56)

[Milica PETROVIC](#) (+32 229-63020)

General public inquiries:

[Europe Direct](#) by phone [00 800 67 89 10 11](#) or by [email](#)