



Council of the European Union
General Secretariat

Brussels, 29 September 2022

WK 12864/2022 INIT

LIMITE

**JAI
MIGR
RELEX
ASIM
COEST
COWEB**

This is a paper intended for a specific community of recipients. Handling and further distribution are under the sole responsibility of community members.

WORKING DOCUMENT

From:	General Secretariat of the Council
To:	Working Party on External Aspects of Asylum and Migration (EMWP)

Subject:	Working Party on External Aspects of Asylum and Migration (EMWP) - presentations
----------	---

Delegations will find enclosed the presentations given by EUROPOL, FRONTEX and EUAA, during the meeting of the EMWP held on 28 September 2022, item 3 on agenda - CM 04277/22.

Migrant Smuggling in the Western Balkan 2022

European Migrant Smuggling Centre

*Working Party on External Aspects of Asylum and Migration:
28 September 2022*

The Europol logo is displayed on a dark blue background. It features the word "EUROPOL" in a white, bold, sans-serif font. To the left of the text is a stylized graphic element consisting of three overlapping, curved shapes in white and yellow, resembling a shield or a stylized 'E'. A yellow diagonal line runs across the bottom right of the image.

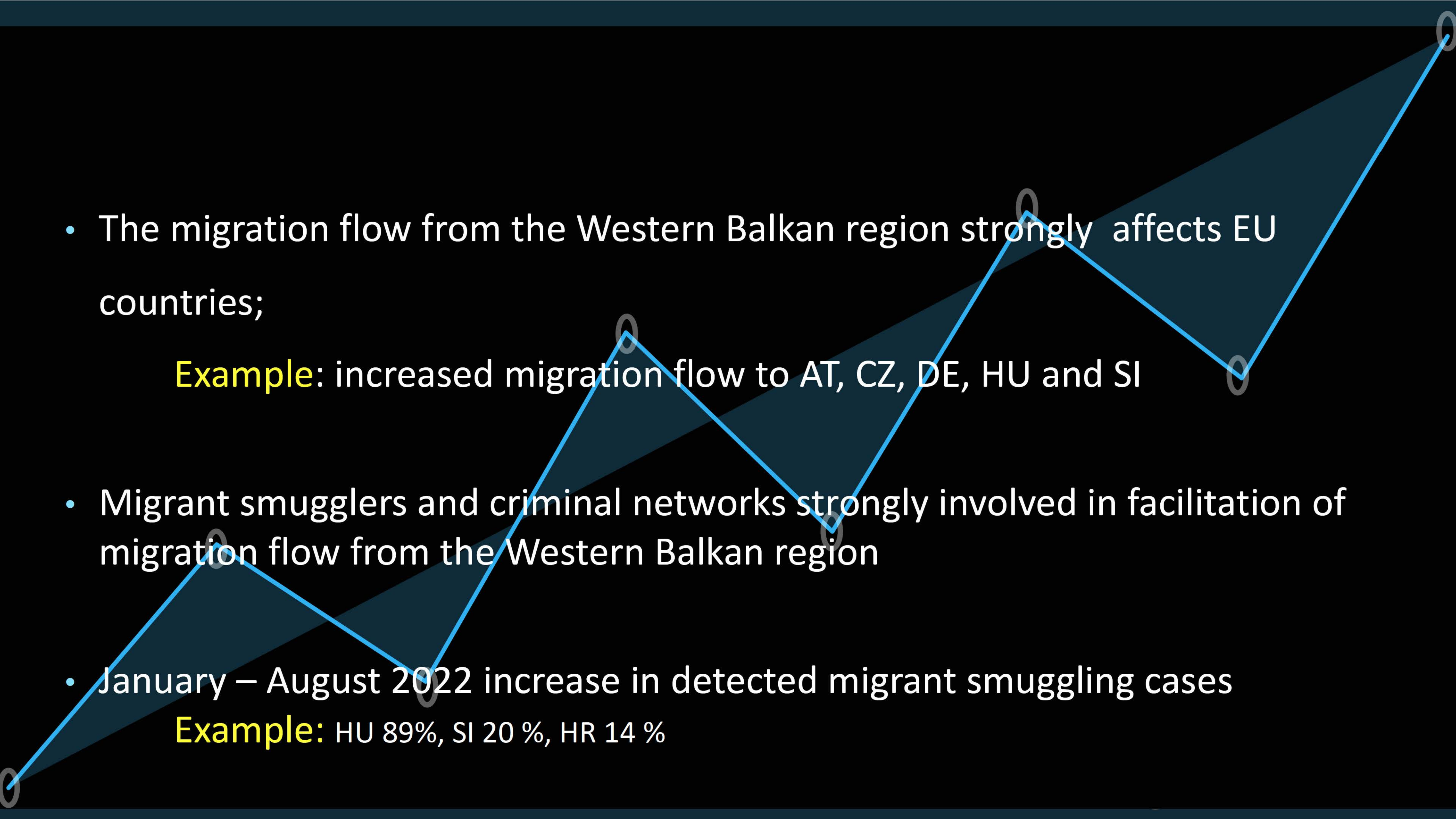
Europol Unclassified - Basic Protection Level

A low-angle, teal-tinted photograph of the Europol building. The building is a modern, multi-story structure with a grid of windows. The word 'EUROPOL' is prominently displayed in large, white, three-dimensional letters on the right side of the building's facade. A dark blue diagonal shape covers the left portion of the image, serving as a background for the text.

I. Situational picture

Statistic, main trends & threats

II. Europol's response

- 
- The migration flow from the Western Balkan region strongly affects EU countries;

Example: increased migration flow to AT, CZ, DE, HU and SI

- Migrant smugglers and criminal networks strongly involved in facilitation of migration flow from the Western Balkan region
- January – August 2022 increase in detected migrant smuggling cases

Example: HU 89%, SI 20 %, HR 14 %

Situational picture in 2022

Main trends

- **Most common modi operandi of migrant smugglers : no change**

Smuggling is concealment in vehicles, in particular cars, (mini-)vans, and lorries

Arrested smugglers: drivers citizens of WB countries & 3rd country nationals sharing nationality with irregular migrants



Source: HU border police

Situational picture in 2022

Main trends

- **Potential abuse of visa policies of Western Balkan Countries**

Increased reporting on smuggling Cuban, Indian, Tunisian and Turkish from the region

***Cubans:** A mixed transnational network with criminal cells along the route: RU – RS – NM – GR (IT) – ES*

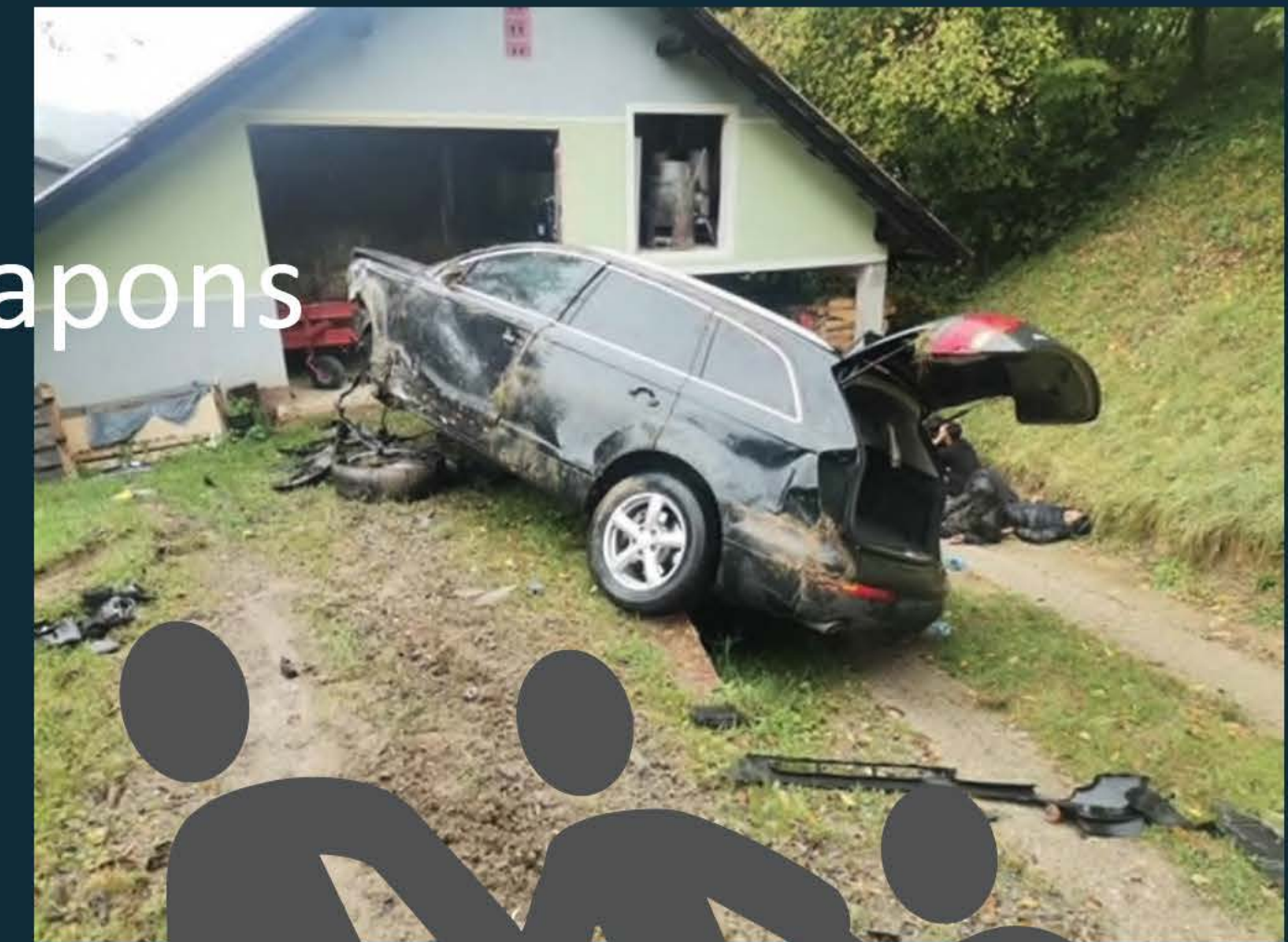
***Turkish:** by plane from Turkey to Serbia to neighboring countries – in vehicles – cars, vans and lorries – on their way to the final destination in the EU.*

Situational picture in 2022

Main trends & threats

Increase reporting on use of violence along the Western Balkan routes

- deadly traffic accidents (cars, vans & lorries)
- attacking/shooting at law enforcements officers
- migrant smuggling advertising video showing weapons
- criminal networks armed with weapons
- clashes between criminal networks



Possible further increase in migrant smuggling cases & violence

Europol's response

- Operational agreement with AL, BA, ME, NM & RS
- Working arrangement with XK*
- Liaison Officers in Europol: AL, ME , NM & RS – JLT Migrant Smuggling & THB
- Priority cases: supporting on going investigations in the field
- Under construction: Operational Task Force (OTF) aiming to combat violent migrant smuggling networks operating along the Western Balkan Routes



**This designation is without prejudice to positions on status and is in line with UNSCR 1244/1999 and the ICJ Opinion on the Kosovo declaration of independence*

Thank you for your
attention

Any
questions?

EUROPOL

www.europol.europa.eu





Frontex in the Western Balkans

Situational picture and cooperation framework

*Presentation for the EMWP meeting
Session 3: Western Balkans migration route*

Pawel Sliwinski

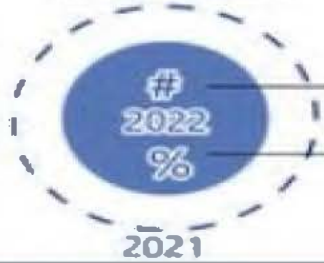
Team Leader, EU Pre-Accession Countries

28 September 2022



NUMBER OF ILLEGAL BORDER-CROSSINGS JAN-AUG 2021/2022

Route Name



Total number
of incidents

Percentage change
from last year

FRONTEx

Eastern Land Border

3 943
-37%

Exits towards the UK

41 067
80%

Western
Balkan

86 581
190%

Eastern Mediterranean (total)

25 592
123%

Central
Mediterranean

52 900
34%

Western
Mediterranean

7 977
-25%

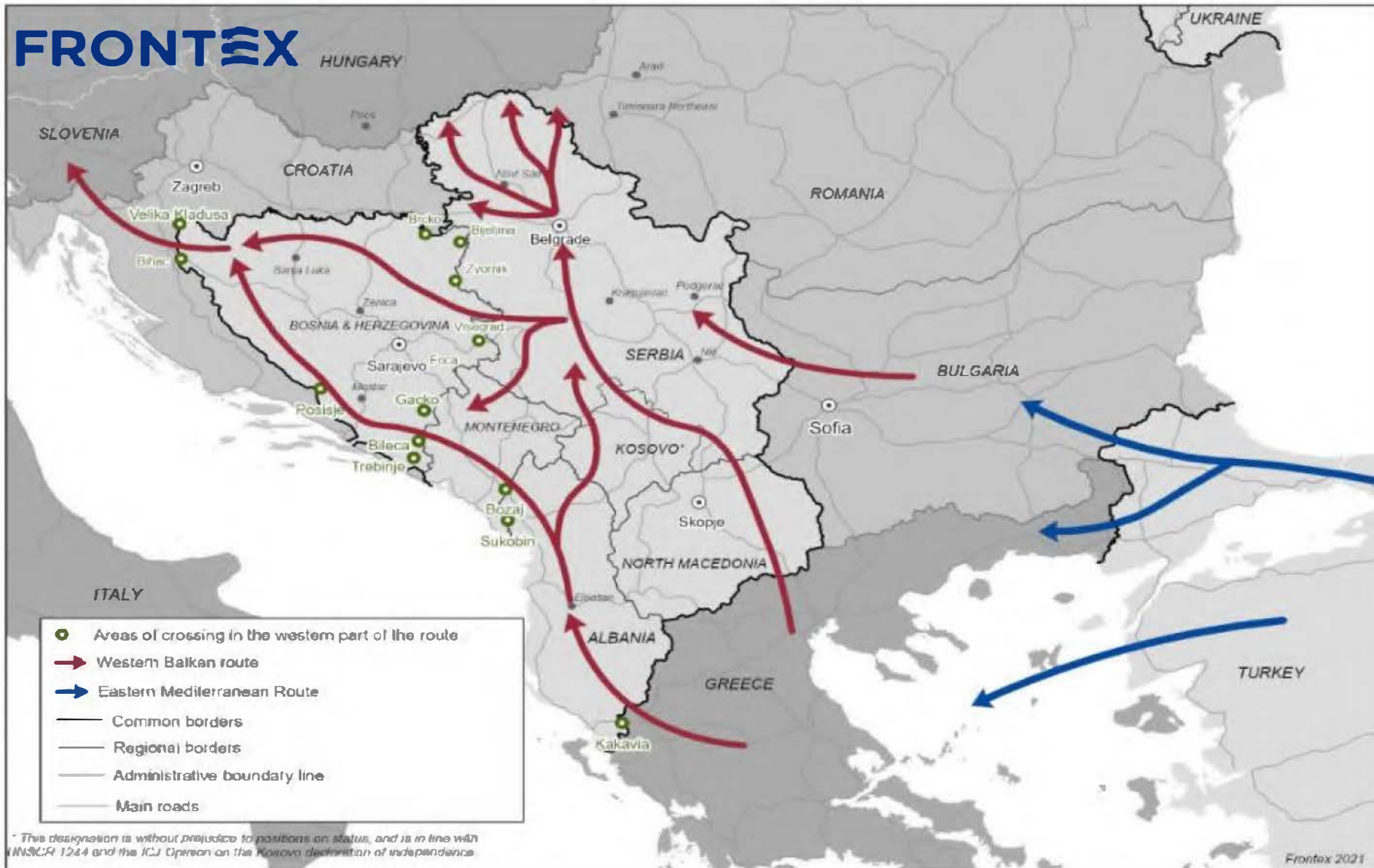
Western
African

10 595
13%

The designations employed and the presentation of material on the map do not imply the expression of any opinion whatsoever on the part of the European Union concerning the legal status of any country, territory or area or of its authorities, or concerning the delimitation of its frontiers or boundaries.

Frontex 2022

Situational picture in the Western Balkans



Frontex and the Western Balkans - cooperation framework

Status
Agreements

Working
Arrangements

Joint risk analysis:
WB-RAN

Liaison Officers:
Belgrade, Tirana

Partnership Academies
network

EU-funded capacity
building projects

Joint operations with executive powers

JO Albania - since 2019

JO Montenegro - since 2020

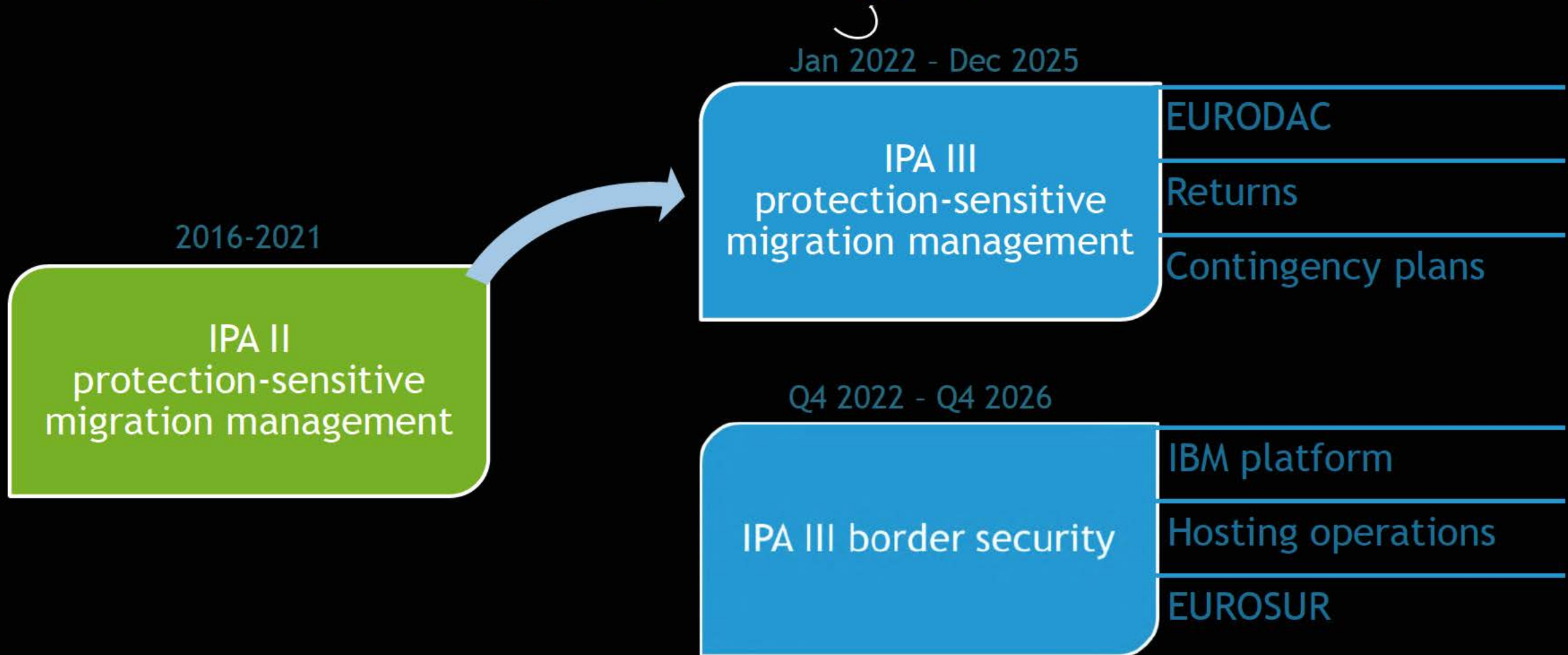
North Macedonia -
advanced preparations

JO Moldova - since 2022

JO Serbia - since 2021

Bosnia and Herzegovina -
preparations not started yet

EU-funded capacity building projects under IPA



Upcoming priorities of Frontex in WB

Implementation of
Status Agreements 2.0

Frontex - CZ PRES
event on Status
Agreement
operations

Implementation
of two IPA III-
funded projects

Coordination
with other
actors in WB

Renewal of Working
Arrangements

Information exchange
under EUROSUR



EUROPEAN BORDER AND COAST GUARD AGENCY

Thank you for your attention!

Pawel Sliwinski
Team Leader, EU Pre-Accession Countries

Asylum Trends in EU+ countries along the Western Balkans Route

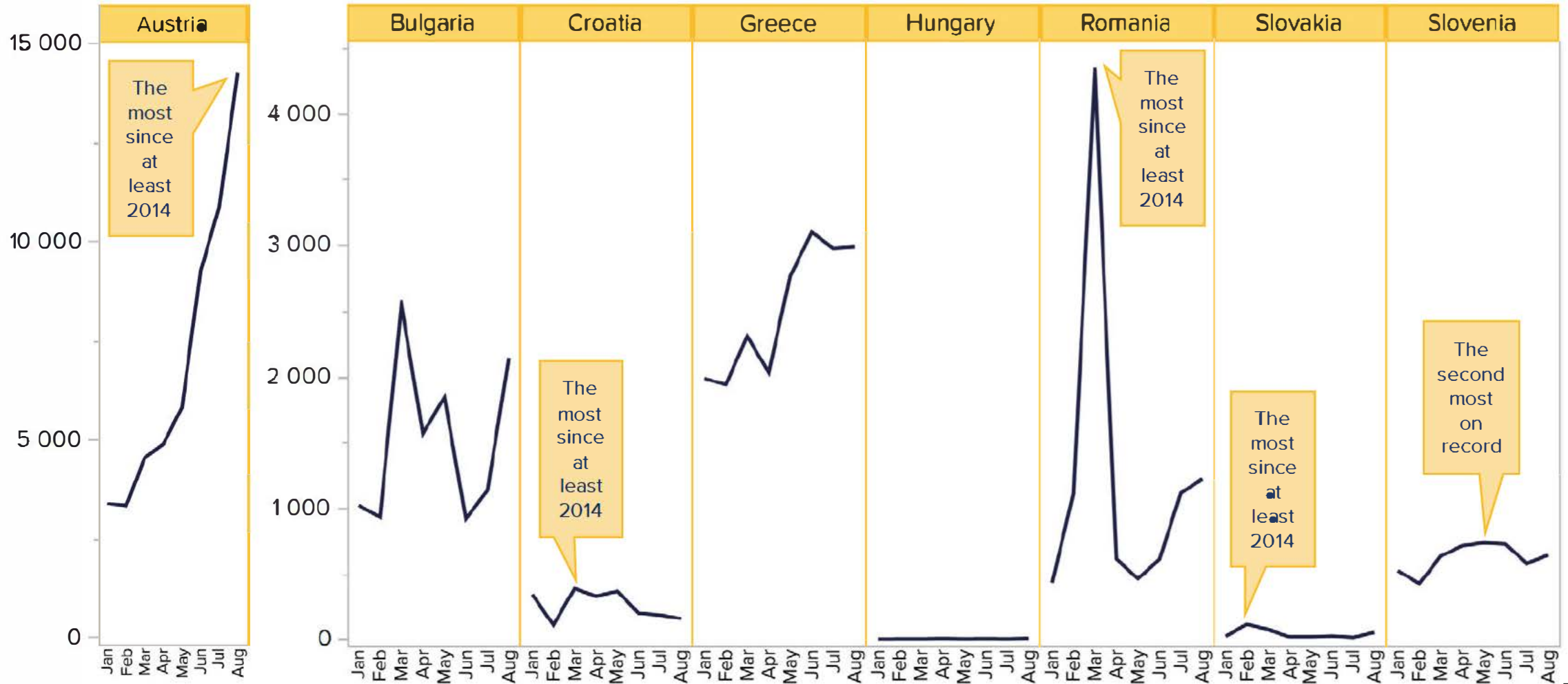
EMWP
28 September 2022

This presentation is based on data exchanged under the EUAA Early warning and Preparedness System (EPS), which consist of statistical data provided to the EUAA by European Union Member States plus Norway and Switzerland (EU+) via a standard template. These data are provisional, unvalidated and therefore might differ from validated data submitted at a later date to Eurostat (according to Regulation (EU) 2020/851 amending Regulation (EC) No 862/2007).

LIMITED



Asylum Trends in EU+ Countries along the Balkan Routes so far in 2022



EMWP, 28 September 2022

EUAA/AKC/SAU/DARS/2022/558

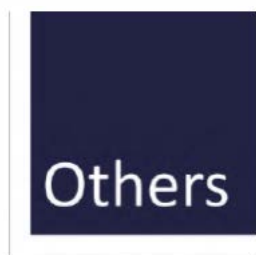
LIMITED

Source: EUAA EPS

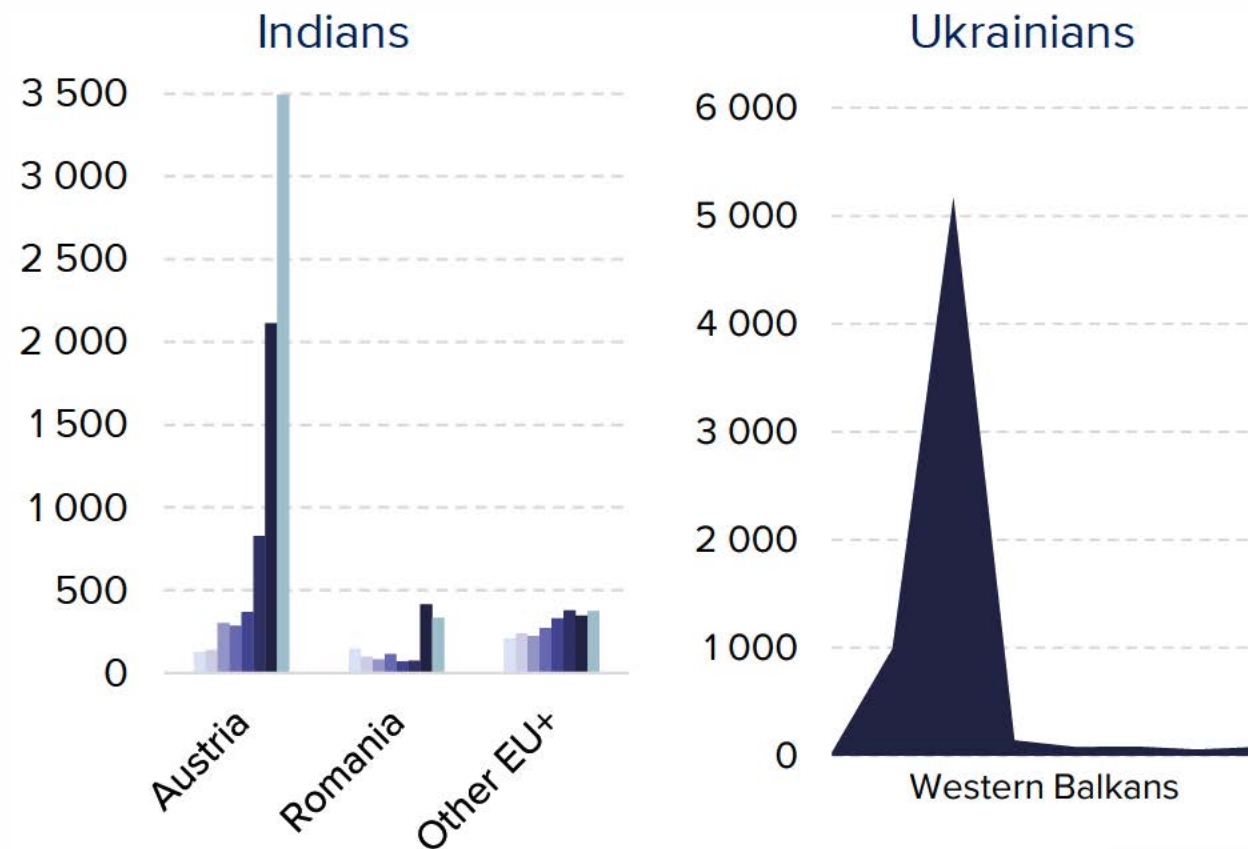
Aug 2022 data partially based on weekly aggregates

Main Citizenships of Applicants in EU+ Countries along the Balkan Routes

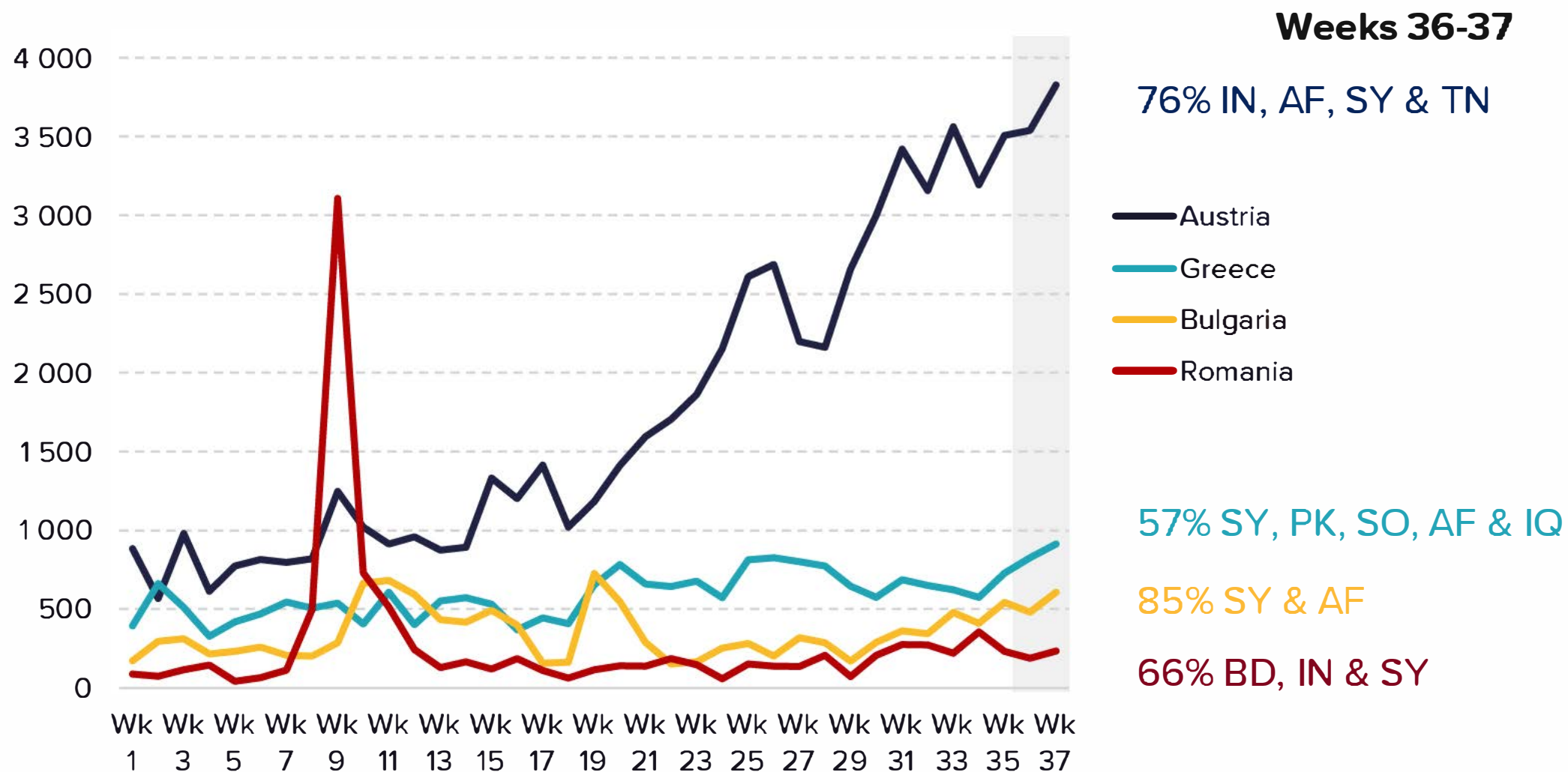
Afghans and Syrians continued to lodge the most applications along the Western Balkans (Jan-Aug 2022)



Trends for selected citizenships (Jan-Aug 2022)



Weekly Asylum Trends in 2022 until 18 September



EUAA Analytical Products available at the restricted Analytical Area:

<https://euaa.europa.eu/member-area/analytical-area/>

No access? Request to
become a member:

[https://euaa.europa.eu/
register-analytical-area](https://euaa.europa.eu/register-analytical-area)

(only for staff of asylum
authorities in EU+
countries)



Support is our mission

www.euaa.europa.eu

LIMITED

