



Council of the European Union
General Secretariat

Brussels, 07 June 2018

WK 6932/2018 INIT

**JAI
MIGR
COMIX**

This is a paper intended for a specific community of recipients. Handling and further distribution are under the sole responsibility of community members.

MEETING DOCUMENT

From:	General Secretariat of the Council
To:	Delegations
Subject:	Working Party on Integration, Migration and Expulsion/Mixed Committee (EUIceland/Norway and Switzerland/Liechtenstein)

Delegations will find attached the presentation on European Centre for Returns Update on activities given by FRONTEX at the above-mentioned meeting.

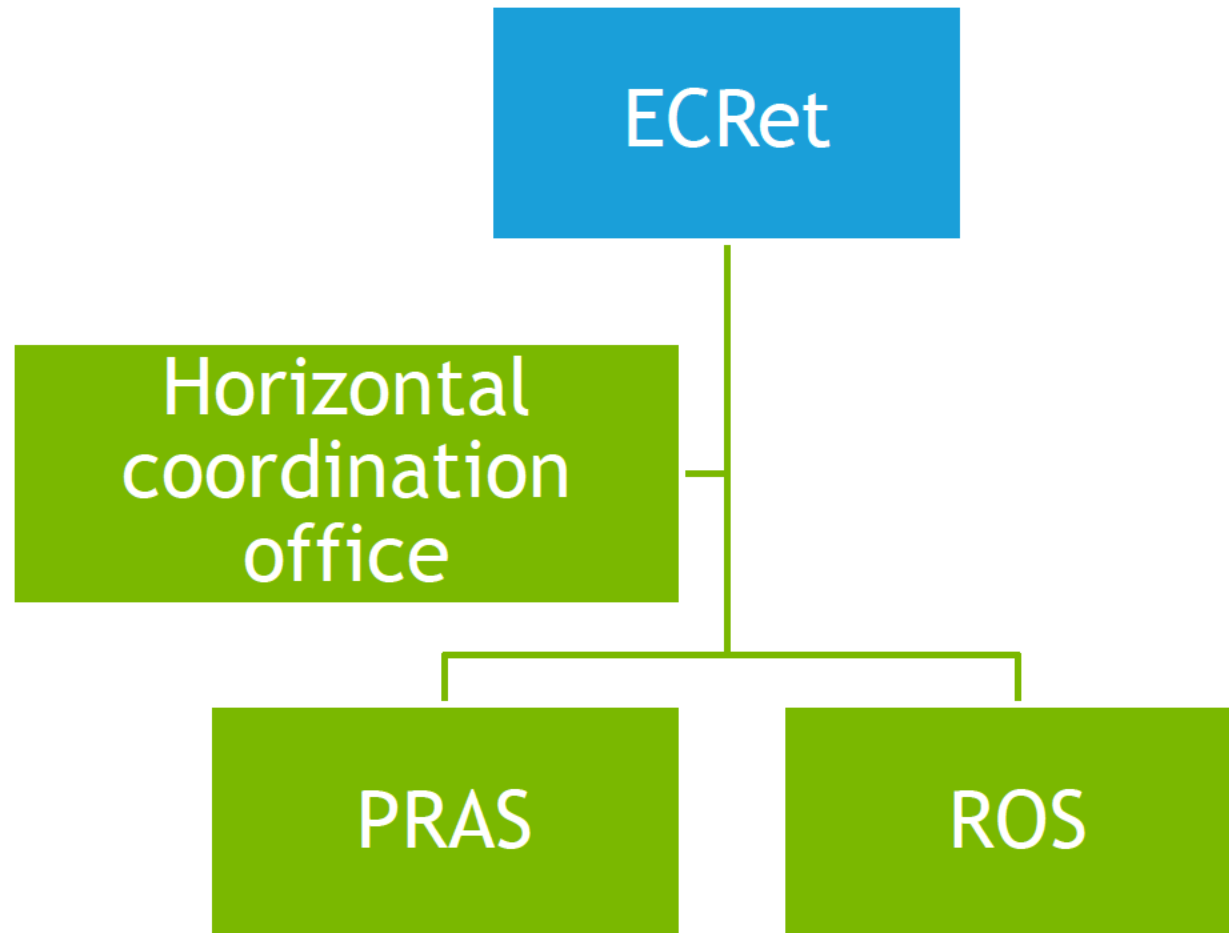
European Centre for Returns Update on activities



Council Working Party on Integration, Migration and Expulsion
Brussels, 6 June 2018



ECRet: structure



Highlights on return and readmission operations

Reporting period: January – May 2018

1000 return operations by charter flights
200 return operations by scheduled flights
100 readmission operations



143 return operations
by charter flights



198 return operations
by scheduled flights



14 readmission operations



7 readmission operations

New destinations
by Germany:



Burkina Faso



Senegal

New Destination:
Belarus by Switzerland






New destination for collecting
return operations:
Montenegro



New destination for
scheduled flight operations:



-  OMS charter flights
-  OMS scheduled flights
-  OMS readmissions

Pre-return Assistance

Operational support

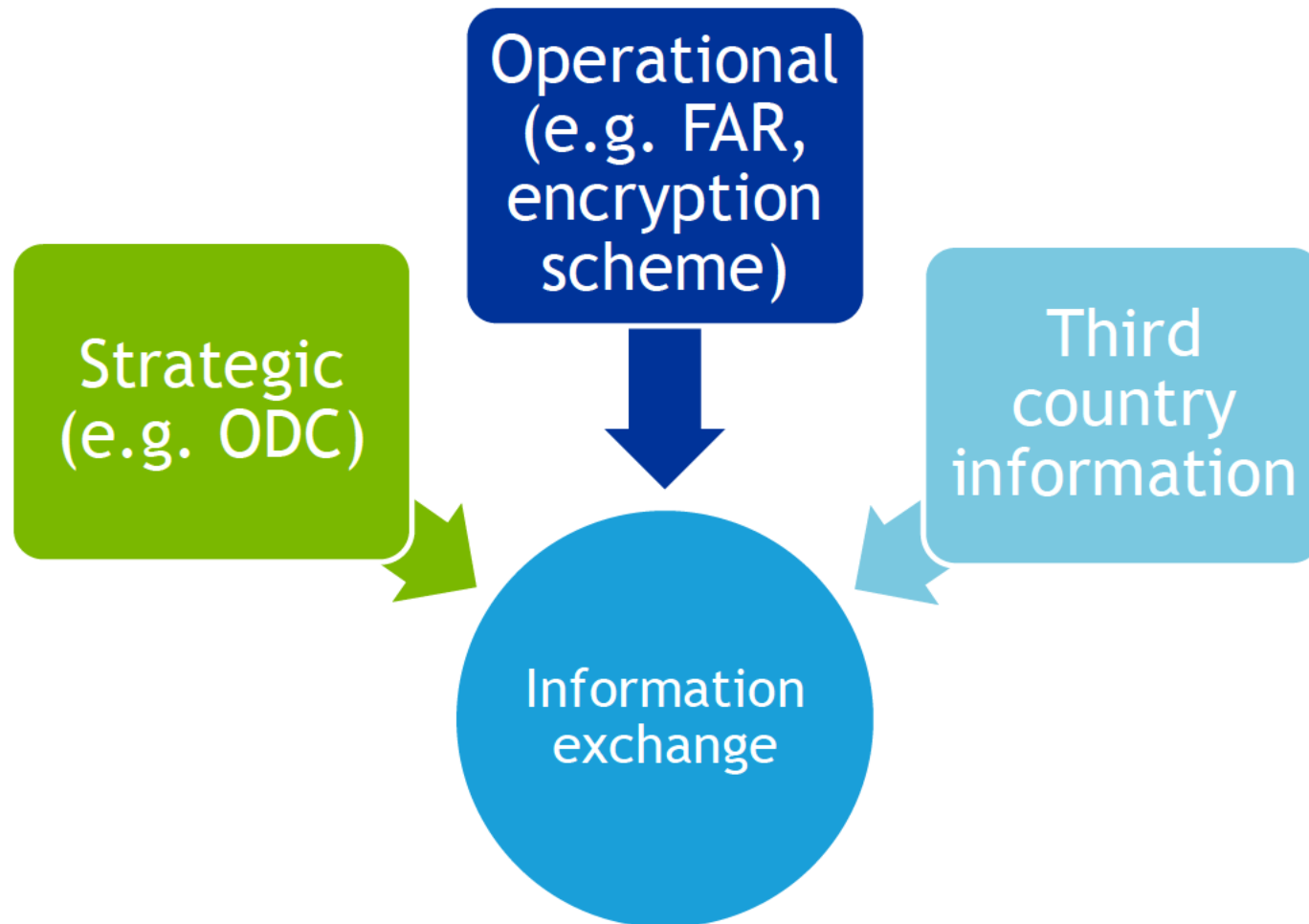
- Return Specialist
- IT-support
- Training

International cooperation

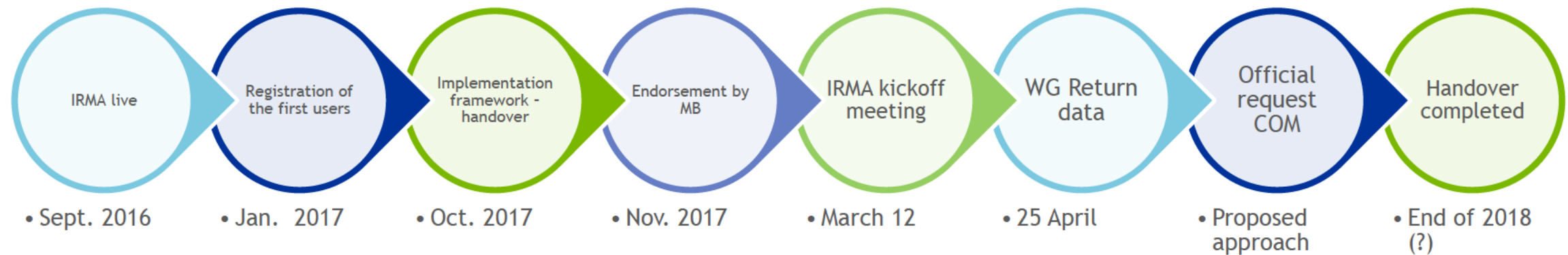
- Identification Missions
- EU-funded projects
- Sensitization/familiarization mission

IRMA

IRMA: Concept



IRMA handover: Key developments



IRMA handover: technical/contractual aspects

Development

- Ensuring business continuity

Hosting

- DG DIGIT
- Conclude MoU

Qlikview licenses (statistics)

- Ensuring business continuity
- New tool?

Business analysis

- DG JRC
- Recruiting new BA

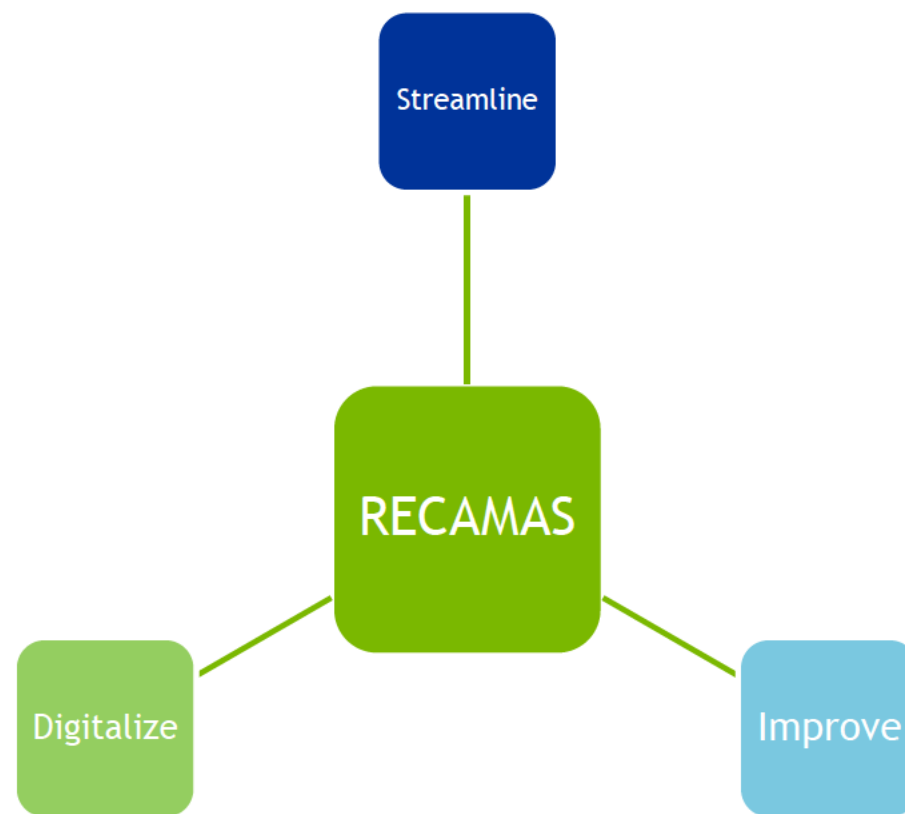
Budget for MS to manage IRMA ODC

- Staff

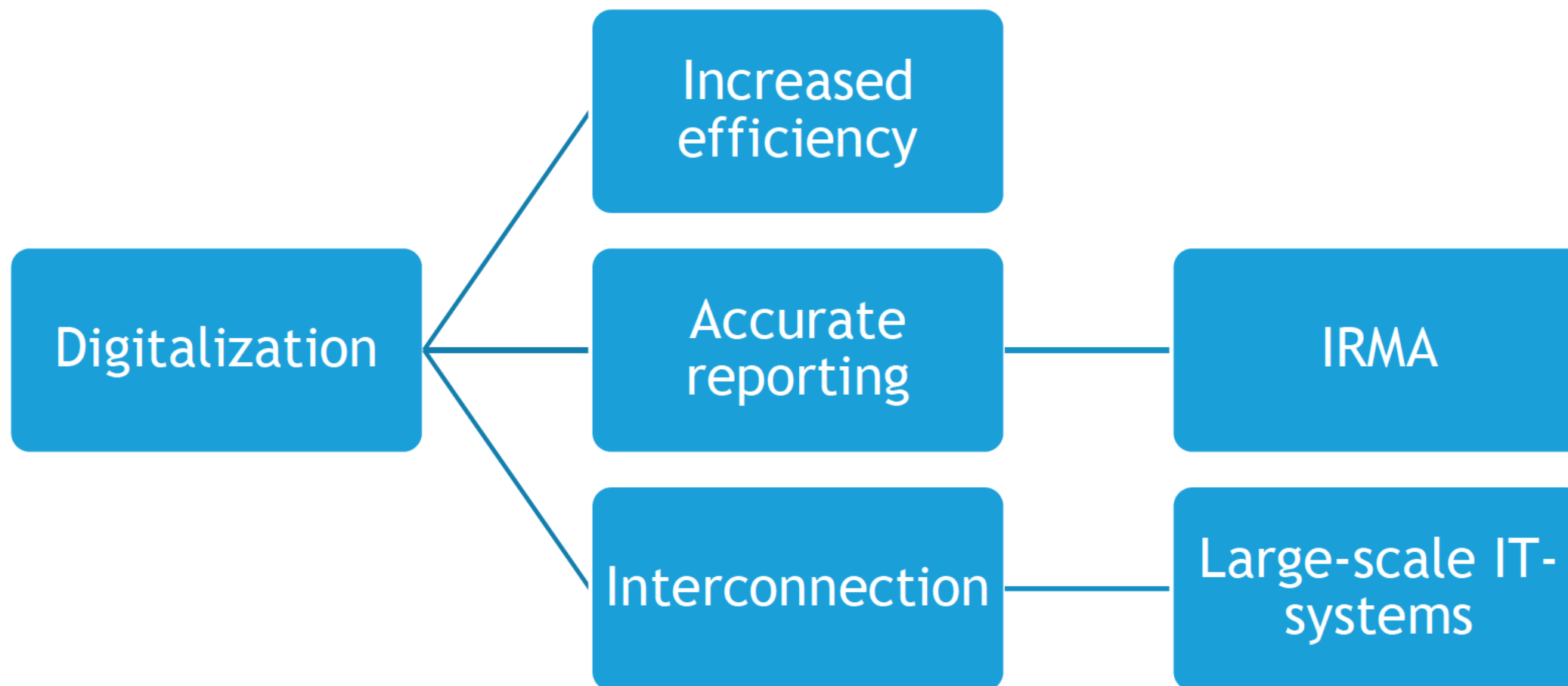
Helpdesk

- User/platform management
- Content management

IRMA: Operational data collection



RECAMAS: Objectives



Model-RECAMAS: concept

- Reference model for the whole EU
- Based on the experience of the MS
- Basis for a gap analysis
- Continuously improved
- 8 modules

Not a new system!



Model-RECAMAS: 8 modules

Common module

- Common features of the system (e.g. generate templates)

Apprehension module

- Registering the migrant (e.g. scanning identification documents)

Measures model

- Management of the migrant after apprehension (e.g. allocate to detention centre)

Detention module

- Manage the migrants that are in detention (e.g. detention period)

Identification and documentation module

- Manage the identification and acquisition of documents (e.g. plan visit to embassy)

Returns module

- Organise the actual return of the migrant (e.g. book the flight)

Case module

- Provide an overview of the migrant's case (e.g. support family case management)

Transportation module

- Manage the transportation of migrant to different facilities (e.g. between detention centres, to the hospital, to courts)



Questions?

European Border and Coast Guard Agency (Frontex)
Plac Europejski, 6
02-844 Warsaw
Poland

Email ECRet:
frontex.europa.eu
frontex.europa.eu