



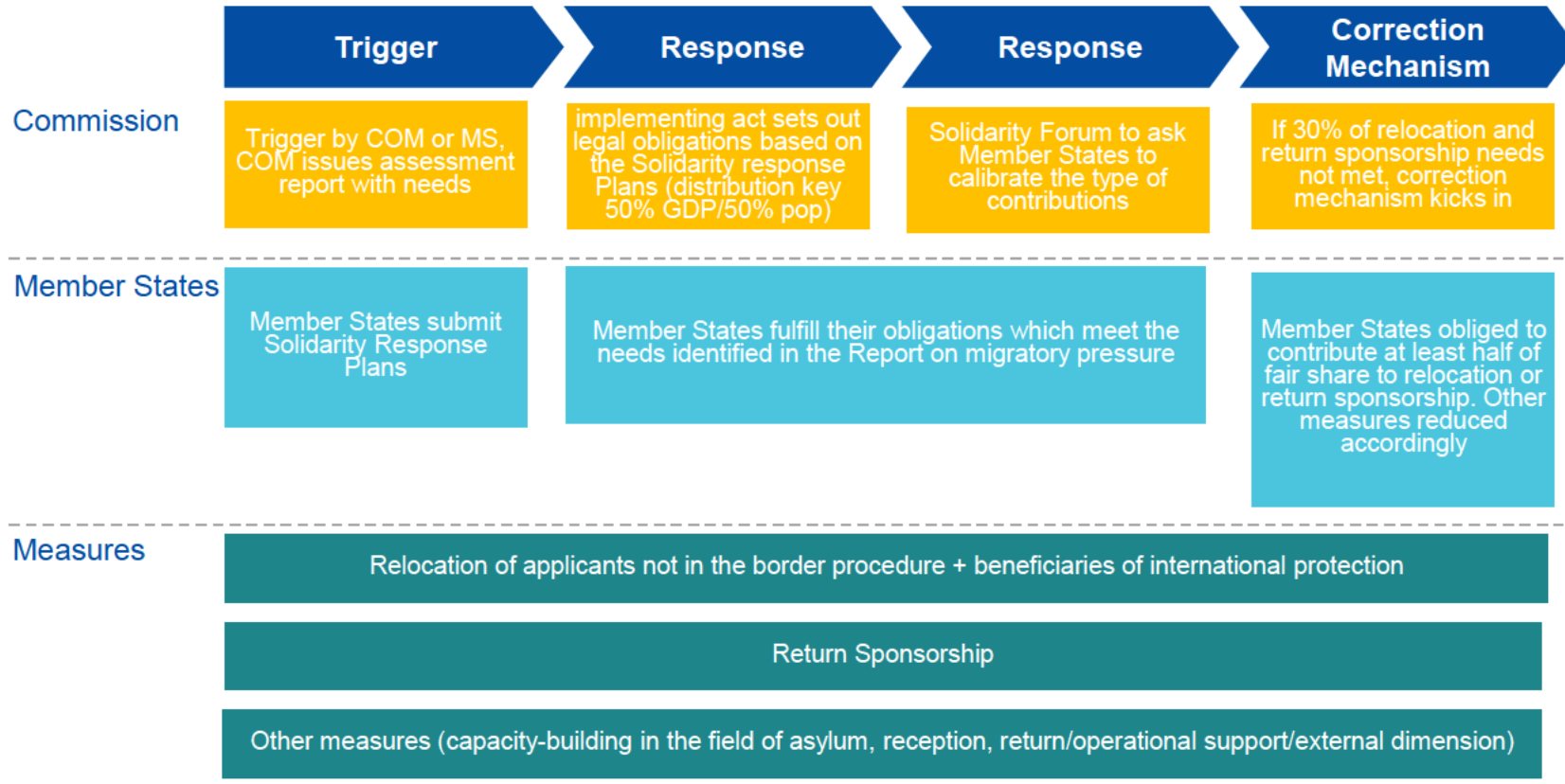
# Solidarity mechanisms

Member States under pressure

Search and rescue operations

Crisis

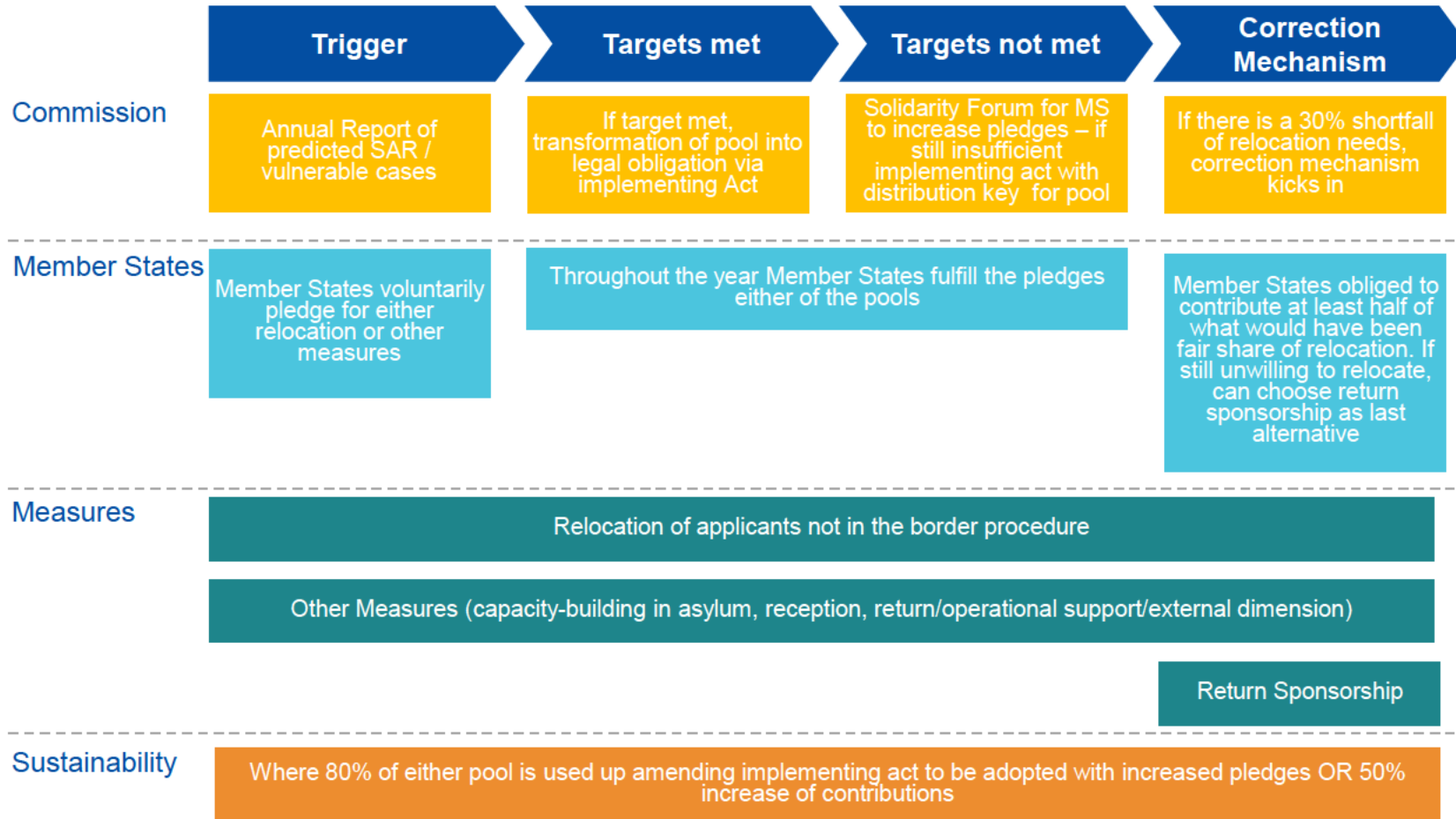
# Constant solidarity for Member States under pressure



## INBUILT FLEXIBILITY

- If contributing MS received double the EU per capita average of applications in recent years, reduction of share by 10%.
- Voluntary measures deducted from MS share in implementing act

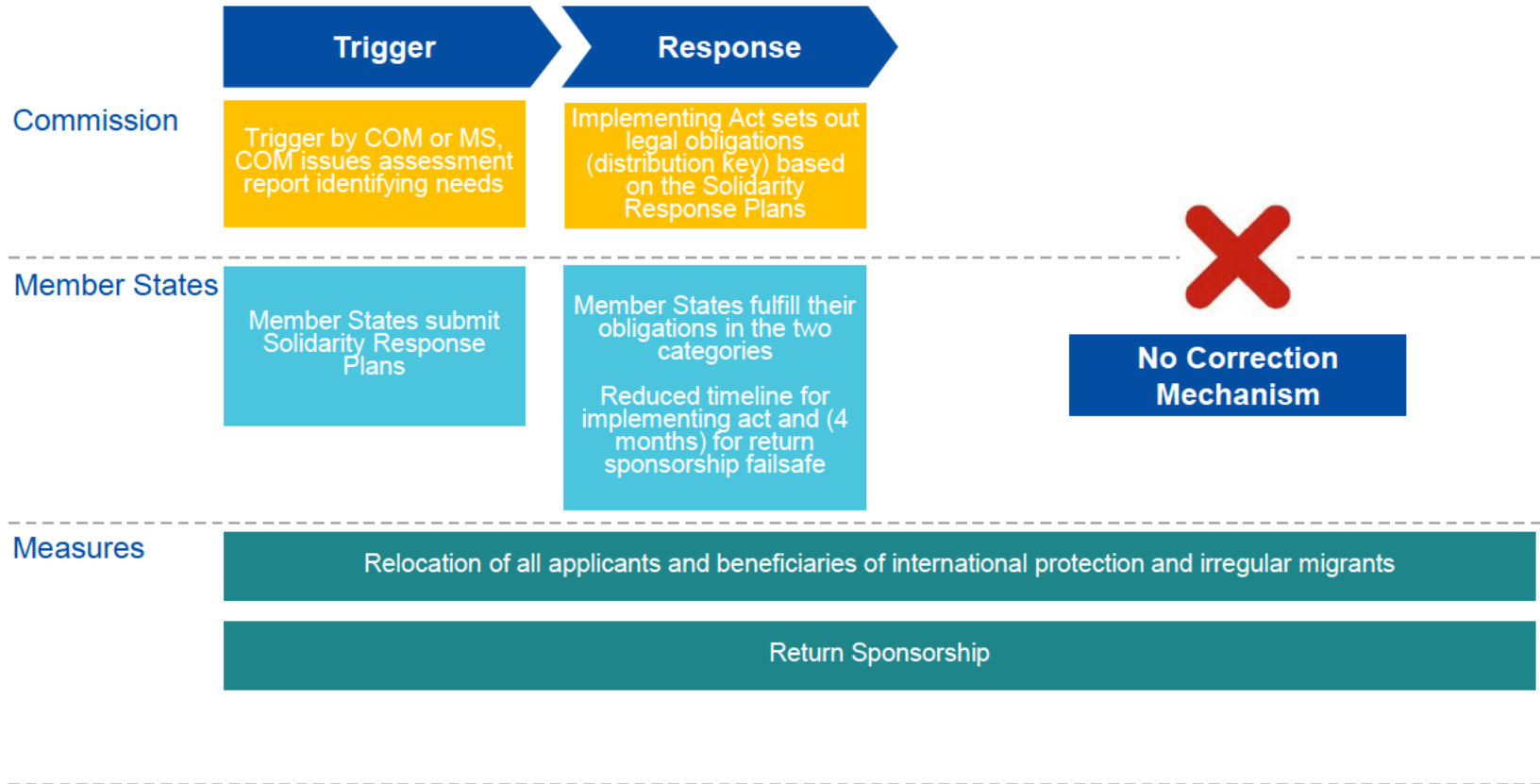
# Predictable solidarity for Search and Rescue



## INBUILT FLEXIBILITY

- Where the correction mechanism is applied MS can choose return sponsorship instead of relocation

# Immediate solidarity in crisis times



# Possible solidarity measures

| Article AMMR | Scope of solidarity  | Pressure | SAR   | Crisis Regulation |
|--------------|--|----------|---|-------------------|
| 45(1)(a)     | Relocation of applicants <u>not</u> in border procedure  | X        | X   | X                 |
| 45(1)(c)     | Relocation of beneficiaries  | X        |   | X                 |
| 45(1)(d)     | Capacity in asylum, reception, return, operational support, capacity aimed at the external dimension | X        | X   |                   |
| 45(1)(b)     | Return sponsorship   | X        | X<br>(only at the correction stage- if 30% shortfall for relocations) | X                 |
| 45(2)(a)     | Relocation of applicants in the border procedure   |          |   | X                 |
| 45(2)(b)     | Relocation of irregular third country nationals  |          |   | X                 |

# Correction Mechanism for Member States under pressure

COM reaches the conclusion that solidarity contributions required for Member State A (under pressure) in terms of relocation and return sponsorship is 1000 (500 for each of these) in addition to capacity measures (asylum case workers and containers)

Member States B, C and D with a share of solidarity contributions of respectively 10%, 15% and 10% of the total share, indicate in their solidarity response plans that they will choose capacity measures instead of relocation or return sponsorship

Since the shortfall for relocation and return sponsorship is above 30% (the total amount of the shares of these 3 Member States represent 35%), the COM will run the correction mechanism

| Member State B (10%)   | Member State C (15%)   | Member State D (10%)   |
|--|--|--|
| 50% of its share (i.e. 5% of the total EU share) in relocation / return sponsorship ⇒ 50 | 50% of its share (i.e. 7.5% of the total EU share) in relocation / return sponsorship ⇒ 75 | 50% of its share (i.e. 5% of the total EU share) in relocation / return sponsorship ⇒ 50 |

825 out of the 1000 relocation and return sponsorship will be met;  
the remaining 50% of each of Member State's B, C and D share will be contributed in capacity measures

# Correction Mechanism - Search and Rescue

COM reaches the conclusion that solidarity contributions required for Member State A (experiencing recurring arrivals due to search and rescue operations) in terms of relocation is 500 in addition to capacity measures (asylum case workers and containers)

Member States B, C and D which do not experience search and rescue operations and have a share of solidarity contributions of respectively 10%, 15% and 10% of the total share, indicate in their solidarity response plans that they will choose capacity measures instead of relocation

Since the shortfall for relocation is above 30% (the total amount of the shares of these 3 Member States represent 35%), the COM will run the correction mechanism (in this case MS may also indicate that they will contribute through return sponsorship instead of relocation)

| Member State B (10%)   | Member State C (15%)   | Member State D (10%)   |
|--|--|--|
| 50% of its share (i.e. 5% of the total EU share) in relocation / return sponsorship ⇒ 25 | 50% of its share (i.e. 7.5% of the total EU share) in relocation / return sponsorship ⇒ 38 | 50% of its share (i.e. 5% of the total EU share) in relocation / return sponsorship ⇒ 25 |

413 relocations and return sponsorships will be offered;  
the remaining 50% of each of Member State's B, C and D share will be contributed in capacity measures

# Thank you



© European Union 2020

Unless otherwise noted the reuse of this presentation is authorised under the [CC BY 4.0](https://creativecommons.org/licenses/by/4.0/) license. For any use or reproduction of elements that are not owned by the EU, permission may need to be sought directly from the respective right holders.

