



European Network of Law Enforcement Technology Services



Enlets PCP Briefing

P.Padding , Core group leader

15 Nov 2013



Content

What is Enlets ?

PCP input



What is Enlets ?

European Network of Law Enforcement Technology Services



*2008; Working group Law Enforcement Working Party
26 Memberstates
Coregroup*

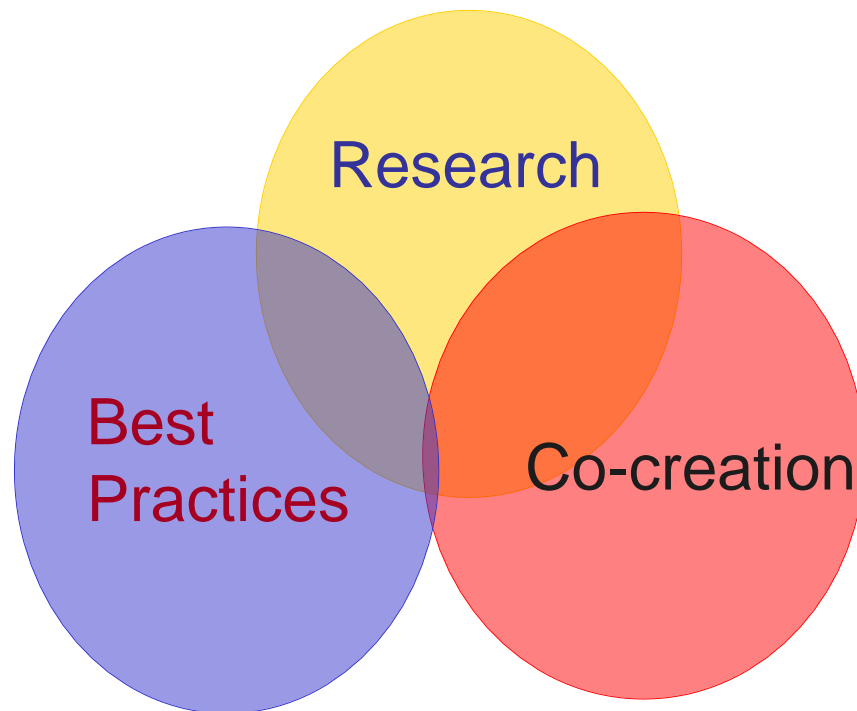
A decorative graphic consisting of overlapping colored squares (yellow, red, blue) and a black crosshair.

Mission

- ENLETS supports *front line policing and the fight against serious and organised crime* by gathering user requirements, scanning and raising awareness of new technology and best practices, benchmarking and giving advice. It is active in joint initiatives, sharing information and networking between law enforcement agencies, industry and research organisations. It is a point of contact to access European law enforcement technical organisations



Technology scope of ENLETS; include all levels



A decorative graphic on the left side of the slide, consisting of overlapping yellow, red, and blue squares with a black crosshair.

Council Conclusions (Enfopol 148)

Council tasked ENLETS Core group to:

- organize a technology watch function for internal security research and industrial policy tasks in Europe
- serve as a central contact point for Member states, Research and industry, agencies and the Commission
- To report to the LEWP and COSI



Content

PCP input

- Useful tool
- New for LEA
- Needs guidance

PCP Front line policing: Uniforms & Materials



Safe

Strong

“fit”

locating

New

Materials ?

PCP Front line policing: mobile detection

New
Concepts

Cars,
trains,
containers

Persons,
goods



PCP Front line policing: Communication

high data
volume

On the
beat,

Cars,

Operation
rooms

RTI

Two way
systems

H2020



PCP: Front line policing; drugs and alcohol testers

“A long the
road control “

Multi tester

Reliable





PCP: (Sensor) IT systems

Open IT

Fast,
secure

Variety of
sensors

Big data

Inter-
operability

COP





PCP: Robotics on the internet

Crawlers

EU and
national
priority's

THB

MB

Fraud
investigations



PCP: Robotics in Investigations

Large volume
data

Complex on
line and off
line data

Complex
investigations

Multiple
sources

Many
scenarios,

Many
questions



PCP: Recovery data by non specialist

Many
devices

Non
specialist

Large
number
investigations

Rapidly &
Effectively



PCP: Robotics on the crime scene

3D

Automatic
assessment

Recognizing
traces

No human
interference

Chain of
custody



Download from
[Dreamstime.com](https://www.dreamstime.com)
This watermarked comp image is for previewing purposes only.

17542994
Thomasajot | Dreamstime.com

PCP: Robotics in major accidents

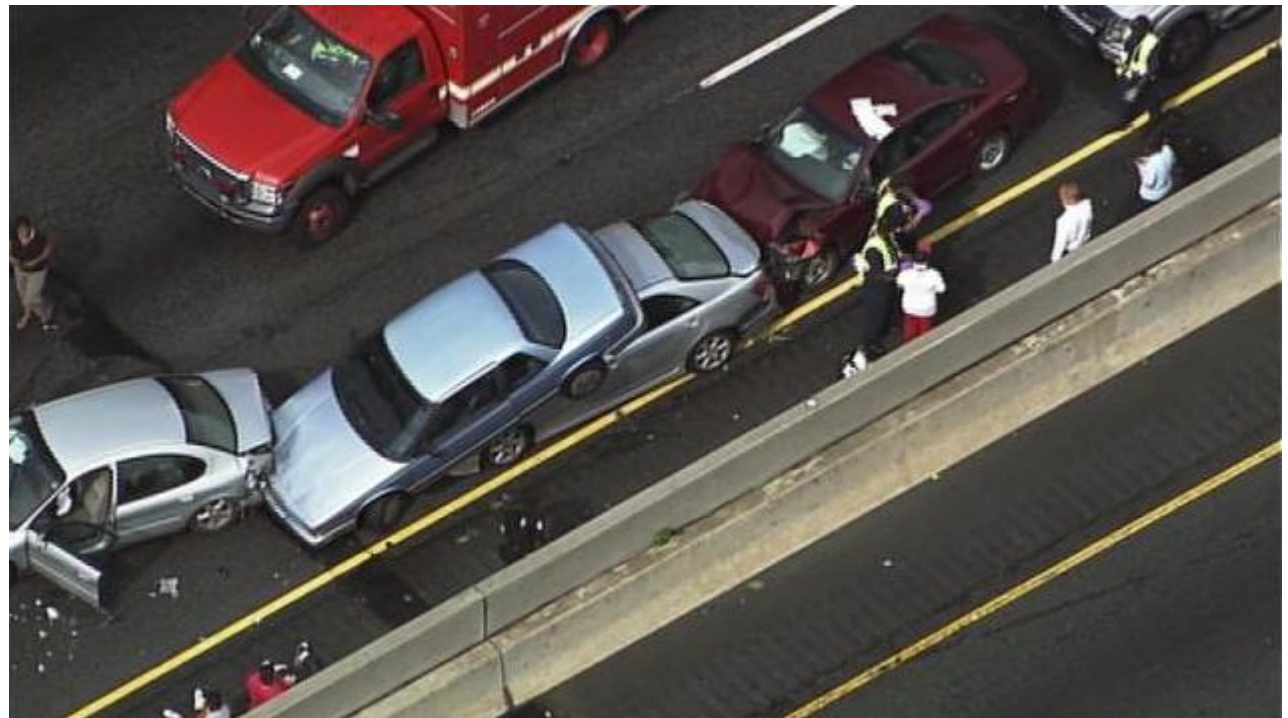
PAD

Scenario's

Safety first responders

Triage

Accidents,
Collapsed buildings,
dangerous goods





PCP: Covert Surveillance

Covert
High quality
Long
distance
Privacy
enhanced
technology
Chain of
custody
Multiple
sensors



Listen





Thank you for your attention

