



**COUNCIL OF  
THE EUROPEAN UNION**

**Brussels, 19 February 2009**

**5171/09**

**LIMITE**

**SIRIS 7  
COMIX 22**

**NOTE**

---

from : Slovenian and Austrian delegations  
to : SIS/SIRENE Working Party/Mixed Committee (EU-Iceland/Norway and  
Switzerland/Liechtenstein)

---

No. prev. doc.: 17327/08 SIRIS 167 COMIX 917

---

Subject : Staff shortage and Workload SIS II

---

In September 2007, when 9 new MS were integrated into the SIS, the number of entered alerts, hits and the number of sent and received forms increased consequently, causing the scope of work to increase as well. In 2005, the German Delegation drew up document no 17098/06, SIRIS 234, which comprises work analysis at SIRENE offices. This analysis is based on the fact that SIS II, which was going to integrate all MS, even the new ones, was going to become operational by the end of 2006.

Due to a delay and the new timetable, according to which SIS II is supposed to become operational by the end of 2009, the new MS joined SIS1+ in 2007, followed by Switzerland in 2008. In addition, the following was accomplished:

- implementation of the EAW,
- implementation of the Swedish Initiative,
- implementation of the Prüm Treaty,
- expansion of the range of tasks in SIRENE offices (in certain MS, SIRENE operators also participate actively in surrender and extradition procedures).

**01.01.2007 – 31.12.2007**

<b>MEMBER STATE</b>	<b>NR. OF HITS - OWN ALERT</b>	<b>NR OF. HITS FOREIGN ALERT</b>	<b>NR. OF EMPLOYEES</b>
AUSTRIA	2238	2748	28
BELGIUM	1583	2724	43
DENMARK	214	383	25
FINLAND	215	353	32
FRANCE	3629	3910	20
GREECE	2294	3249	34
GERMANY	5828	8680	66
ITALY	10139	1406	39
ICELAND	8	10	11
LUXEMBURG	356	597	10
THE NETHERLANDS	2068	1378	70
NORWAY	322	211	14
PORTUGAL	775	1000	31
SWEDEN	552	614	10
SPAIN	1803	5636	39
<b>01.09.2007 31.12.2007</b>			
CZECK REPUBLIC	863	273	19
HUNGARY	93	788	26
LATVIA	92	45	16
LITHUANIA	88	158	23
MALTA	3	10	18
POLAND	61	6342	44
SLOVAKIA	520	458	17
SLOVENIA	75	1859	17

First spreadsheet shows the number of hits in OMS in the period from 01.01.2007 to 31.12.2007 and the number of hits from 01.09.2007 to 31.12.2007 in NMS. From 01.09.2007 to 31.12.2007 there were 1795 hits on the base of own alerts in NMS, which is 7,8% of all OMS hits in 2007, and 9933 hits on the base of foreign alerts which is 23% of all OMS hits in 2007.

**01.01.2007 – 15.04.2007**

<b>MEMBER STATE</b>	<b>NR. OF HITS OWN ALERT</b>	<b>NR OF. HITS FOREIGN ALERT</b>	<b>NR. OF EMPLOYEES</b>
AUSTRIA	769	563	20
BELGIUM	494	952	43
DENMARK	151	83	25
FINLAND	75	115	32
FRANCE	1126	1164	20
GREECE	772	1287	34
GERMANY	1426	2459	63
ITALY	2313	352	39
ICELAND	0	2	11
LUXEMBOURG	188	107	10
THE NETHERLANDS	587	426	70
NORWAY	65	50	14
PORTUGAL	228	307	31
SWEDEN	201	683	11
SPAIN	568	1877	39
<b>TOTAL</b>	<b>8.963</b>	<b>10.427</b>	

**01.01.2008 – 15.04.2008**

<b>MEMBER STATE</b>	<b>NR. OF HITS OWN ALERT</b>	<b>NR OF. HITS FOREIGN ALERT</b>	<b>NR. OF EMPLOYEES</b>
AUSTRIA	1308	1052	27
BELGIUM	584	899	43
DENMARK	132	85	25
FINLAND	81	119	33
FRANCE	986	1138	27
GREECE	768	453	27
GERMANY	2503	2802	69
ITALY	2982	537	39
ICELAND	0	2	11
LUXEMBURG	166	96	8
THE NETHERLANDS	708	521	65
NORWAY	108	53	14
PORTUGAL	324	396	31
SWEDEN	252	633	13
SPAIN	742	2192	39
CZECK REPUBLIC	1287	1142	19
HUNGARY	840	1040	26
LITHUANIA	288	281	23
LATVIA	127	56	19
MALTA	30	7	18
POLAND	616	17030	48
SLOVAKIA	1082	1010	17
SLOVENIA	139	1443	17
<b>TOTAL</b>	<b>16.053</b>	<b>32.987</b>	

The spreadsheets show that the number of hits on the base of own alerts increased in comparison period from 01.01.2007 to 15.04.2007 and 01.01.2008 to 15.04.2008 (based on data received) by approx. 79% and on the base of foreign alerts hits increased by approx 216% (ANNEX 1).

**01.01.2007 – 31.12.2007**

<b>MEMBER STATE</b>	<b>NR. OF HITS - OWN ALERT</b>	<b>NR OF. HITS FOREIGN ALERT</b>	<b>NR. OF EMPLOYEES</b>
AUSTRIA	2238	2748	20
BELGIUM	1583	2724	43
DENMARK	214	383	25
FINLAND	215	353	32
FRANCE	3629	3910	20
GREECE	2294	3249	34
GERMANY	5828	8680	66
ITALY	10139	1406	39
ICELAND	8	10	11
LUXEMBURG	356	597	10
THE NETHERLANDS	2068	1378	70
NORWAY	322	211	14
PORTUGAL	775	1000	31
SWEDEN	552	614	10
SPAIN	1803	5636	39
CZECK REPUBLIC	863	273	19
HUNGARY	93	788	26
LATVIA	92	45	16
LITHUANIA	88	158	23
MALTA	3	10	18
POLAND	61	6342	44
SLOVAKIA	520	458	17
SLOVENIA	75	1859	17
<b>TOTAL</b>	<b>33819</b>	<b>42832</b>	<b>644</b>

**01.01.2008 – 31.12.2008**

<b>MEMBER STATE</b>	<b>NR. OF HITS - OWN ALERT</b>	<b>NR OF. HITS FOREIGN ALERT</b>	<b>NR. OF EMPLOYEES</b>
AUSTRIA	4641	3697	28
BELGIUM	1800	2792	43
DENMARK	379	285	25
FINLAND	252	335	32
FRANCE	4307	3498	20
GREECE	1711	1532	34
GERMANY	9091	10173	66
ITALY	14012	4426	39
ICELAND	6	7	11
LUXEMBURG	233	684	10
THE NETHERLANDS	2600	4099	70
NORWAY	422	233	14
PORTUGAL	863	1274	31
SWEDEN	674	644	10
SPAIN	6522	2252	39
CZECK REPUBLIC	2615	4072	19
HUNGARY	1133	2446	26
ESTONIA	189	228	
LATVIA	141	292	16
LITHUANIA	955	963	23
MALTA	0	0	18
POLAND	1725	9278	44
SLOVAKIA	4189	3327	17
SLOVENIA	249	6869	17
<b>TOTAL</b>	<b>58709</b>	<b>63406</b>	<b>652</b>

The spreadsheets show that the number of hits on the base of own alerts increased in comparison periods from 01.01.2007 to 31.12.2007 and 01.01.2008 to 31.12.2008 (based on data received) by approx. 73,6% and on the base of foreign alerts hits increased by approx 48% (ANNEX 2).

We must not forget Switzerland. Switzerland records 198 external hits and 2725 internal hits since entering SIS on 14.08.2008 until the end of 2008.

The number of employees also increased in some MS, but not proportionately to the number of hits. In some MS the number of employees even decreased. Number of employees increased just by approx. 1,2% in the mentioned periods.

All mentioned spreadsheets clearly show that there are more hits, meaning that, on the one hand, the scope of work has increased considerably, and on the other hand, the number of employees has remained the same or has barely increased. Certainly, this is in no proportion to the increased number of hits and the scope of work.

It necessary to take in consideration that 6 MS (Cyprus, United Kingdom, Ireland, Romania, Bulgaria and Liechtenstein) will join the SIS in near future. Consequently the number of hits will increase.

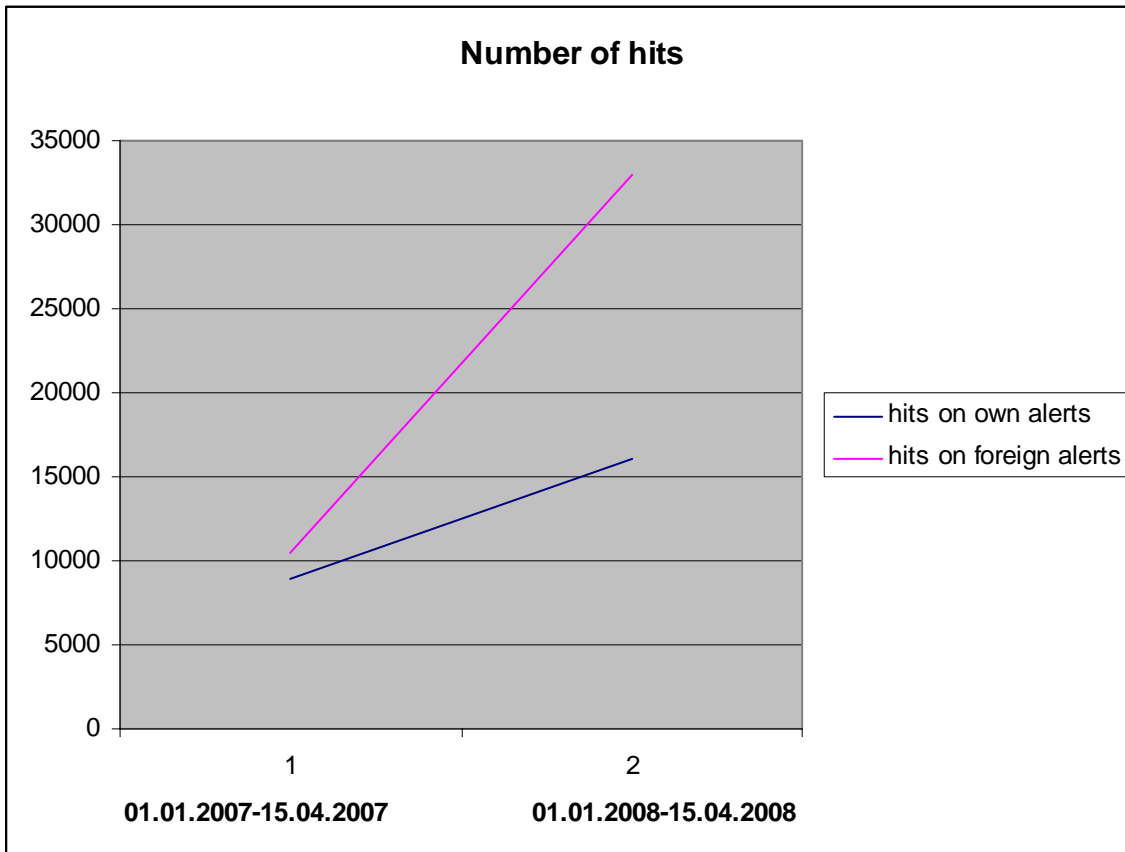
ANNEX 3 (below) shows us that the amount of data, which will be entered by the MS into the SIS II, will increase, mostly due to new parameters (ships, containers, industrial equipment, airplanes). It is more than obvious; that the number of entries will increase considerably This will result in an increased number of hits, exchange of forms and messages, ID material and others.

It can be seen that the scope of work at SIRENE offices has increased. Considering the alerts to be entered into SIS II , the scope of work will increase significantly, which will have a large impact on the work of SIRENE offices. Regarding the unchanged or slightly increased number of employees and in order to avoid any future problems, these issues need to be addressed immediately by the following measures:

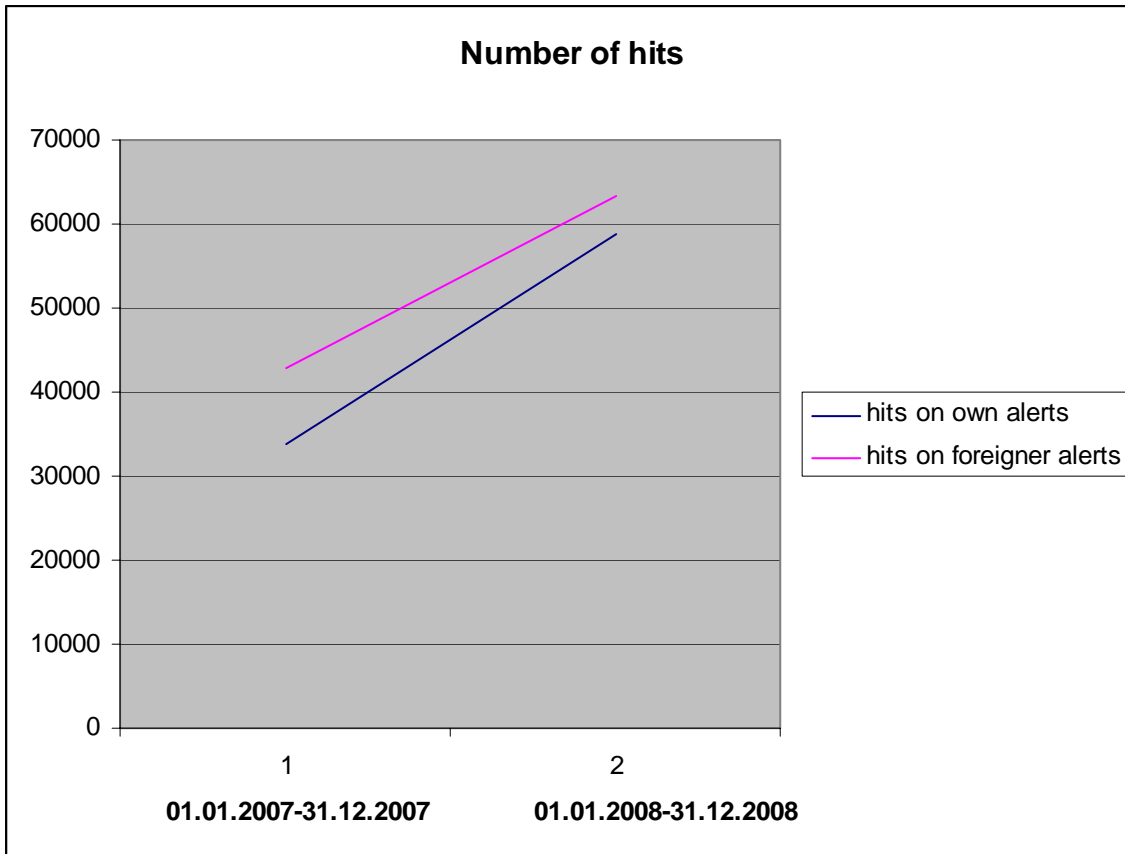
- staff fluctuation in SIRENE offices needs to be prevented,
- new operators must be recruited and staff continuity of operators needs to be provided for.

It has to be noted that SIS II will become operational in 2009. At that time, there will not be enough time to recruit new operators. A staff shortage will result in slower procedures, and in a decrease in professional performance. Therefore, the issue of the staff shortage at SIRENE offices needs to be addressed immediately. It is a fact that discussions about staff shortage in SIRENE Bureaus were on the agenda of Heads of SIFRENE meetings and also in the meetings of WG SIS/SIRENE. It is essential to focus on informing heads of offices and on providing them with realistic data and projections, as well as on pro-active and immediate approach to solving the problem of the staff shortage.

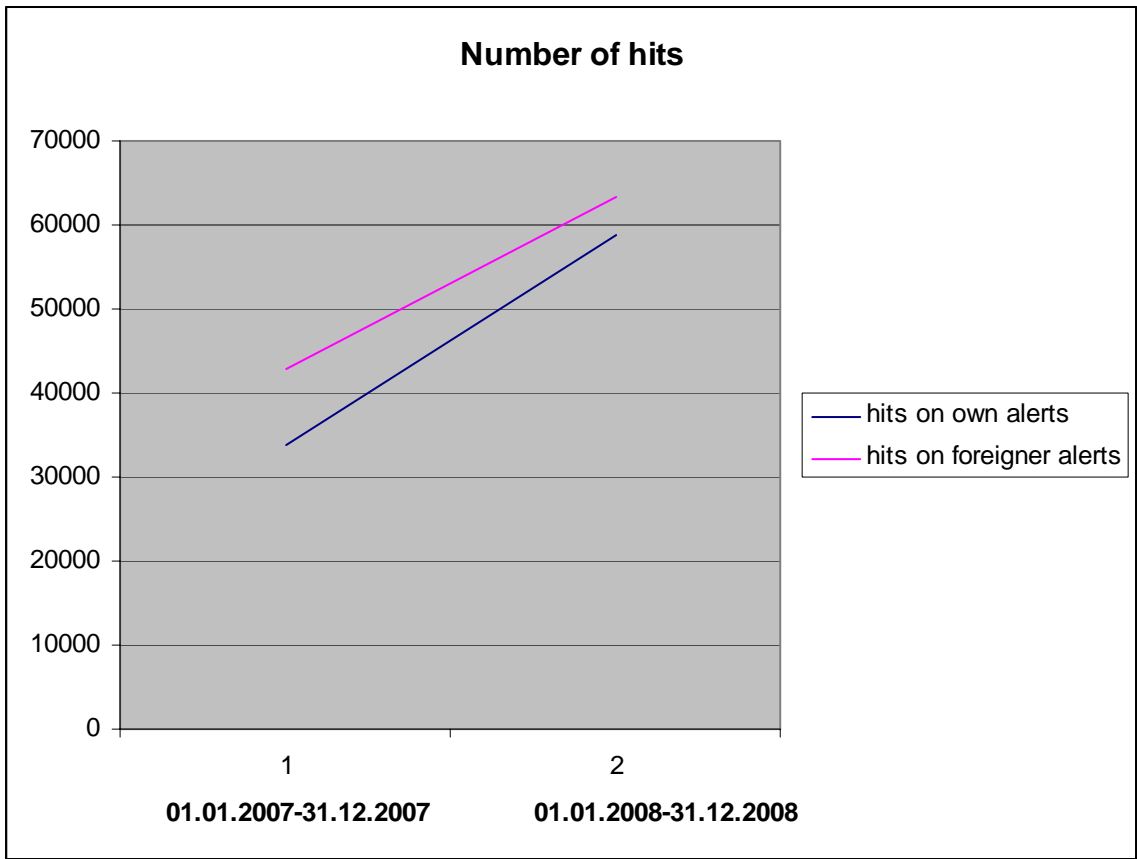
COMPARISON OF NUMBER OF OWN AND FOREIGN ALERTS IN PERIOD FROM 01.01.2007 TO 15.04.2007 AND FROM 01.01.2008 TO 15.04.2008



COMPARISON OF NUMBER OF OWN AND FOREIGN ALERTS IN PERIOD FROM 01.01.2007 TO 31.12.2007 AND FROM 01.01.2008 TO 31.12.2008







The table's below contain all data from the MS, for those MS which where not able to send some information about their possible data, the figures where taken from the daily statistic of the C.SIS.

Artikel 95 - 99 (26 Dec. 24 Reg. 32 Dec. 34 Dec. 36 Dec.)										
	26 Dec.	24 Reg.	32 Dec.	32 Dec.	34 Dec.	36/2 Dec.	36.2 Dec.	36/3 Dec.	36/3 Dec.	Total
Austria 2)	800	16.000	400	170	6.000	1.000	--	--	--	24.370
Belgium	1.450	350	1.830	1.185	580	160	100	--	--	5.655
Bulgaria	--	--	--	--	--	--	--	--	--	0
Czech Rep.	650	26.650	280	190	550	40	--	--	--	28.360
Cyprus	40	40.000	20	5	20	30	30	30	--	40.175
Danmark	120	2.000	40	60	200	250	10	20	10	2.710
Estonia	50	630	115	5	405	10	5	--	--	1.220
Finland	90	2.270	35	20	10	20	--	--	--	2.445
France	2.920	51.660	3.025	11.130	24.030	11.960	4.360	--	--	109.085
Germany 1)	--	--	--	--	--	--	--	--	--	130.000
Greece	320	52.460	375	85	--	--	--	--	--	53.240
Hungary 1)	--	--	--	--	--	--	--	--	--	70.000
Ireland 4) 5)	200	--	130	--	--	--	--	--	--	330
Island	5	30	5	5	5	--	--	--	--	50
Italy 3)	3.000	400.000	6.000	--	16.000	11.000	--	--	--	436.000
Latvia	130	25	325	50	120	--	--	--	--	650
Lithuania	900	1.000	400	--	250	300	--	--	--	2.850
Luxembourg 1)	--	--	--	--	--	--	--	--	--	1.715
Malta 4)	5	5.500	10	--	5	5	--	--	--	5.525
Netherlands	565	17.350	840	640	75	0	1.655	--	--	21.125
Norway	110	3.100	60	30	150	65	--	--	--	3.515
Poland	2.930	18.700	300	230	5	15	5	15	--	22.200
Portugal	585	3.550	1.300	940	6.260	10	5	--	--	12.650
Romania	--	--	--	--	--	--	--	--	--	0
Slovakia 1)	--	--	--	--	--	--	--	--	--	17.000
Slovenia 1)	--	--	--	--	--	--	--	--	--	500
Spain	1.690	47.380	9.950	4.550	4.270	30	2.005	--	--	69.875
Sweden	250	4.000	140	--	--	450	--	--	--	4.840
Swiss 4)	1.100	20.000	--	--	100	100	--	--	--	21.300
UK 5)	--	--	--	--	--	--	--	--	--	0
	18.230	728.705	25.850	19.735	60.415	25.445	8.175	65	10	1.035.845

**Artikel 100 (38 Dec.)**

	<b>BN</b>	<b>DB</b>	<b>FA</b>	<b>ID</b>	<b>VE</b>	<b>LP</b>	<b>IE</b>	<b>BT</b>	<b>BE</b>	<b>AC</b>	<b>SE</b>	<b>CO</b>	<b>VD</b>	<b>Total</b>
Austria g)	250	500	8.000	249.000	9.500	20.000	5.000	25	--	--	1.000	10	--	293.285
Belgium	22.760	25.855	17.330	350.000	15.000	40.000	1.000	100	100	1.000	55.000	100	30.000	558.345
Bulgaria	--	--	--	--	--	--	--	--	--	--	--	--	--	0
Czech Rep. f)	--	870	15.000	963.300	59.050	56.000	3.000	--	--	--	--	--	--	1.097.220
Cyprus	--	1.050	50	1.100	400	--	50	20	20	--	--	10	--	2.700
Danmark d)	200	300	10.000	400.000	10.000	20	5.000	--	--	--	--	--	--	425.520
Estonia	--	--	35	161.240	2.100	--	--	--	--	--	--	--	--	163.375
Finland	--	100	8.450	86.590	3.290	60	--	--	--	--	--	--	--	98.490
France	54.920	153.700	50.410	1.631.455	180.670	--	--	--	--	--	--	--	--	2.071.155
Germany	92.850	200.000	150.000	4.000.000	200.000	500.000	130.000	8.000	--	50	680.000	350	--	5.961.250
Greece	--	725	10.285	8.150	69.770	10	--	--	--	--	--	--	--	88.940
Hungary	220	5	105	243.000	15.000	--	--	--	--	--	--	--	--	258.330
Irland c)	--	--	4.500	60.200	34.000	3.310	42.000	1.360	--	5	--	--	--	145.375
Island	--	165	5	7.690	5	--	--	--	--	--	--	--	--	7.865
Italy	400	27.000	--	7.500.000	800.000	350.000	--	3.500	--	--	680.000	--	--	9.360.900
Latvia	--	15	40	157.940	7.420	500	26	19	24	--	18	--	--	166.002
Lithuania	10	10	3.000	350.000	30.000	160.000	3.800	--	180	5	700	10	--	547.715
Luxembourg	25	35	525	8.480	805	--	--	--	--	--	--	--	--	9.870
Netherlands	290	9.035	1.580	2.503.230	51.940	100	--	--	--	--	--	--	--	2.566.175
Norway	--	20	480	169.675	18.100	--	--	--	--	--	--	--	--	188.275
Malta e)	--	--	--	--	--	--	--	--	--	--	--	--	--	12.000
Poland	--	--	--	38.070	387.400	225.800	--	--	--	--	--	--	--	651.270
Portugal	--	1.710	12.850	64.570	30.920	10	--	--	--	--	--	--	--	110.060
Romania	--	--	--	--	--	--	--	--	--	--	--	--	--	0
Slovakia a)	--	--	4.300	850.000	9.000	--	110	20	--	10	--	--	--	863.440
Slovenia	--	--	30	5.000	1.500	--	--	50	--	--	--	--	--	6.580
Spain	1.330	2.500	32.910	232.040	529.110	--	--	--	--	--	--	--	--	797.890
Sweden	100	--	19.000	213.000	57.000	19.000	5	1.500	3.200	2	--	5	--	312.812
Swiss b)	--	--	--	200.000	80.000	--	--	--	--	--	--	--	--	280.000
UK	--	--	--	--	--	--	--	--	--	--	--	--	--	0
	174.480	423.595	349.610	20.708.790	2.611.300	1.646.540	189.991	14.594	3.524	1072	1.416.718	485	30.0000	27.045.379

<b>Other Information</b>			
	<b>Pictures</b>	<b>Fingerp.</b>	<b>Messag.</b>
Austria	300	300	16.000
Belgium			
Bulgaria			
Czech Rep.	25.500	22.700	9.500
Cyprus	250	200	10.000
Danmark			
Estonia			
Finland			
France			
Germany	80.000	100.000	500.000
Greece			
Hungary *)	--	--	48.000
Irland *)	--	--	--
Island			
Italy	1.500	1.000	25.000
Latvia	546	154	6 800
Lithuania	1.300	900	5.000
Luxemburg	50	50	31.200
Malta	25	25	900
Netherlands			
Norway			
Poland			
Portugal			
Romania			
Slovakia	500	70	10.600
Slovenia	150	100	6.400
Spain			
Sweden	50	50	600
Swiss	10.540	10.000	0
UK			
	120.711	135.549	670.000

**Remarks:**

- 1) The total number of wanted Persons contains all possible categories
- 2) There are more than 85.000 Art. 34 existing on national level.
- 3) The number of alerts on Art. 36/2 of the Dec. / 99 SIC contains specific checks and discret surveillance
- 4) The number of alerts on Art. 32/2 contains minors and adults.
- 5) Art. 24 Regulation will not be used.
  
- a) The number of alerts for vehicles and boats are including also l/p and boat engines
- b) The number of ID and VE are total numbers - BD? and LP?
- c) The number of alerts for boats includes also alerts on boat engines
- d) The Number of alerts under IE contains all the new categories from Art. 38.
- e) The total number contains all possible categories for objects.
- f) There will be just a small number on alerts under the new categories for objects.
- g) The number of l/p includes only stolen l/p.
  
- \*) It's not possible to say how many of the alerts will contain pictures or fingerprints.

-----